An abstract painting with thick, expressive brushstrokes in various colors including blue, green, yellow, red, and white. The texture is highly visible, with some areas showing more paint than others, creating a sense of depth and movement.

# AMERICAN ART

FEBRUARY 12, 2019

NEW YORK

**CAPSULE**  
GALLERY AUCTION





CAPSULE GALLERY presents:

# AMERICAN ART

WITH SELECT ADDITIONS

A curated sale of paintings, photography and sculpture featuring work from The Carrington Collection of Fine Art. Condition reports are provided in the online catalog at [capsuleauctions.com](http://capsuleauctions.com). If you require any additional information to inform your bidding, please contact the gallery.

## Auction:

Tuesday, February 12, 2019 — 12:30 PM EST

## Exhibition:

Capsule Gallery

618 East Ninth Street New York, NY

Friday February 8th, 11am – 5pm

Saturday, February 9th, 11am – 2pm

Monday, February 11th, 11am – 5pm

# CAPSULE GALLERY

## INQUIRIES / INFORMATION

**General Information**

[info@capsulegallery.nyc](mailto:info@capsulegallery.nyc)

**Bidder Registration**

[bids@capsuleauctions.com](mailto:bids@capsuleauctions.com)

**Consignment Inquiries**

[consign@capsuleauctions.com](mailto:consign@capsuleauctions.com)

**Payments and Shipping**

[sales@capsuleauctions.com](mailto:sales@capsuleauctions.com)

Phone: 212-353-2277

Fax: 212-656-1536

**Location**

618 East Ninth Street

New York, NY 10009

**Specialist Directory**

Simon Baranoff

[simon@capsuleauctions.com](mailto:simon@capsuleauctions.com)

Nicholas Thorn

[nick@capsuleauctions.com](mailto:nick@capsuleauctions.com)

Tara O'Toole

[tara@capsuleauctions.com](mailto:tara@capsuleauctions.com)



# CAPSULE

Capsule Gallery is an exciting new venue for Modern, Post-War, Contemporary and other curated art sales. Auctions are conducted live and online from our state-of-the-art exhibition space in New York's East Village. Capsule seeks to make great artwork accessible to a wide range of collectors, art advisors, designers, dealers, and gallerists. We are proud to offer the most competitive consignment terms and best outright purchase offers for exceptional, fresh-to-market artwork.

The buyer's premium for each lot purchased is 25% of the hammer price.

Phone bids may be arranged until 4 pm on the day prior to the sale.

Absentee bids are accepted until the beginning of the sale.

Condition reports are not listed in this catalog. If you have questions about the condition of a particular work, please contact the gallery.

Please note, we are glad to provide you with our opinions of condition, however all works are sold according to our Terms of Sale which can be found in this catalog and online at [capsulefineart.com](http://capsulefineart.com).

Online bidding is available through Invaluable, Artsy and LiveAuctioneers.





# AMERICAN ART

WITH SELECT ADDITIONS

01  
**JULIAN ROBLES** American (b.1933)  
*Indian Rabbit Hunt – Taos Pueblo* (1977)

oil on board  
 signed lower left, stamped verso  
 sight: 24 x 30 inches  
 frame: 34 ½ x 40 ½ inches

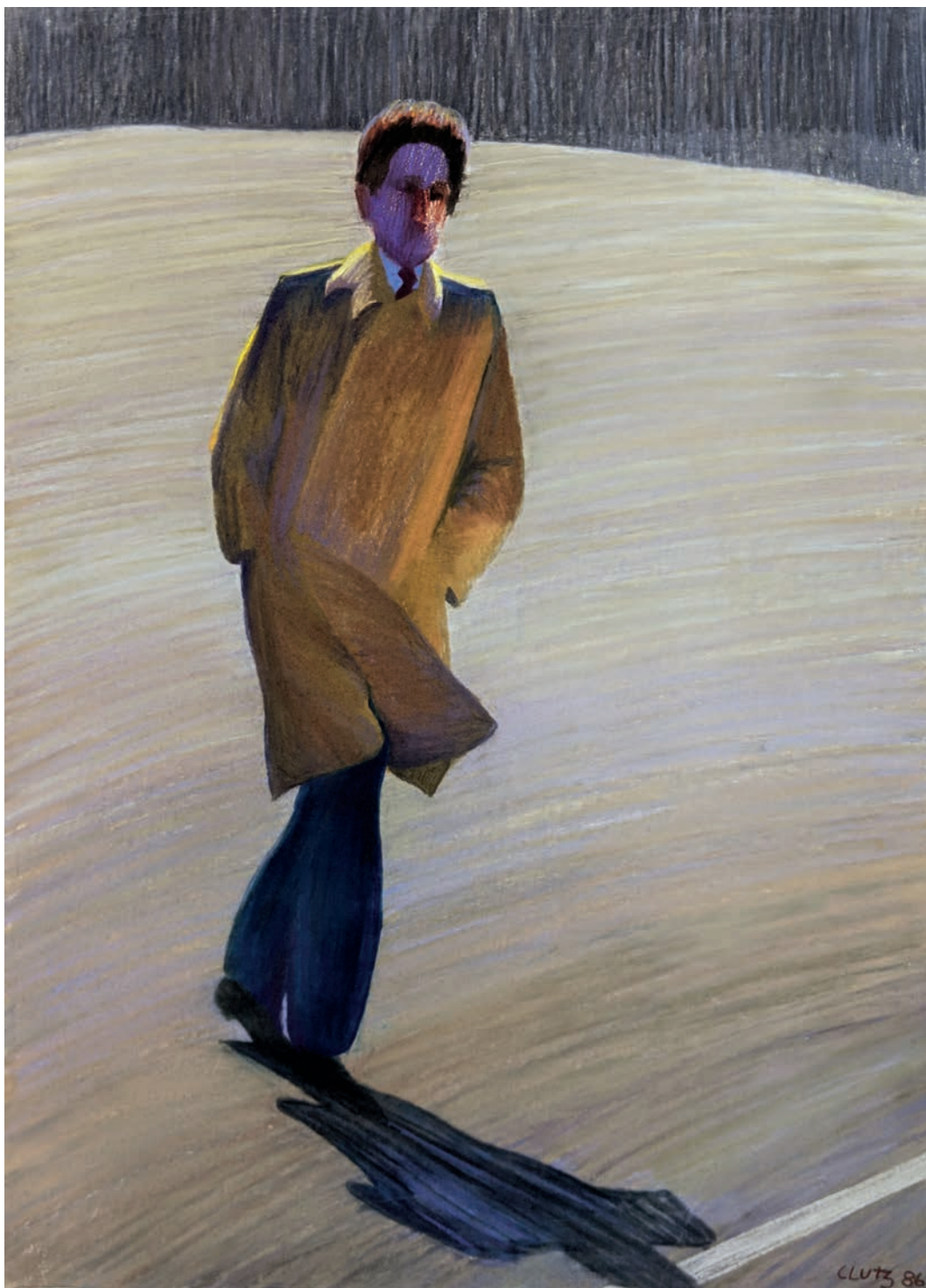
\$1,500 – 2,500











02

**WILLIAM CLUTZ** American (b.1933)*Noon-Trenchcoat II* (1986)

Pastel

signed and dated lower right

sight: 39 ½ x 29 inches

frame: 49 x 38 ½ inches

\$300 – 500

Provenance:

The Collection of Milbank, Tweed, Hadley &amp; McCloy



03



03

**ROBERT COTTINGHAM** American (b.1935)

*Blues* (1989)

screenprint

signed and numbered 31/45

sheet: 26 x 25 ¼ inches

frame: 28 x 27 ½ inches

\$500 – 800

Provenance:

The Collection of Milbank, Tweed, Hadley & McCloy

04



04

**SUSAN BELTON** American (b.1951)

*Toll Booth*

gouache

sight: 18 ½ x 26 ½ inches

frame: 27 x 35 inches

\$300 – 500

Provenance:

The Collection of Milbank, Tweed, Hadley & McCloy

05



05

**LUDWIG BEMELMANS** American (1898–1962)

*View from Carl Shurz Park*

oil on panel

signed lower right

sight: 21 ½ x 27 ½ inches

frame: 28 ¼ x 34 ¼ inches

\$10,000 – 15,000

Provenance:

Private Collection, Connecticut





06  
**ADOLF DEHN** American (1895–1968)  
*New York from Brooklyn Heights*

oil on canvas  
 signed lower right and labeled verso  
 sight: 41 x 27 1/4 inches  
 frame: 47 x 32 3/4 inches  
 \$1,500 – 2,500

Provenance:  
 The Collection of Milbank, Tweed, Hadley & McCloy  
 Milich Gallery



**GUSTAVO NOVOA** Chilean/American (b.1941)

07

*Jungle Scene*

oil on board  
signed lower right  
sight: 5 ½ x 7 ½ inches  
\$400 – 600

08

*Lion and Lioness*

oil on board  
signed lower right  
sight: 5 ½ x 7 ½ inches  
\$400 – 600







09



**PIERRE BITTAR** American/French (b.1934)

**09**

*Snowy Path*

oil on canvas  
signed lower right  
sight: 26 x 32 inches  
frame: 33 ½ x 39 ¼ inches  
\$800–1,200

**10**

*View of a Park*

oil on canvas  
signed lower left  
sight: 28 x 36 inches  
frame: 33 ½ x 39 ¼ inches  
\$800–1,200

**11**

*Winter Stream*

oil on canvas  
signed lower left  
sight: 26 x 32 inches  
frame: 33 ½ x 39 ¼ inches  
\$800–1,200

10



11







12

**GUSTAVO NOVOA** Chilean/American (b.1941)*Jungle scene*

acrylic on screen

signed lower right

four hinged panels: 84 x 72 inches (total)

\$800–1,200

Provenance:

The Collection of Frank Litsky.





13  
**GUAN ZE JU** Chinese (b.1941)  
*Picking Flowers* (1995)

oil on canvas  
 signed lower left  
 sight: 40 x 30 inches  
 frame: 48 ½ x 39 inches  
 \$600 – 900









14

**ROBERT VICKREY** American (1926 – 2011)

*Four Nuns*

oil on canvas

signed lower right

size: 8 x 12 1/8 inches

frame: 16 1/4 x 20 1/2 inches

\$2,000 – 3,000

Provenance:

Private Collection, New Jersey

Midtown Galleries



15



15

**DAVID DEWEY** American (b.1946)

*Yellow Church Windows* (1981)

watercolor

signed and dated lower right

sight: 24 x 18 inches

frame: 32 x 26 inches

\$500 – 800

Provenance:

The Collection of Milbank, Tweed, Hadley & McCloy



16  
**ALEX KATZ** American (b.1927)  
*Good Afternoon I*

lithograph  
signed and numbered 22/80  
sight: 27 1/2 x 35 3/4 inches  
frame: 34 3/4 x 43 inches  
\$3,000 – 5,000

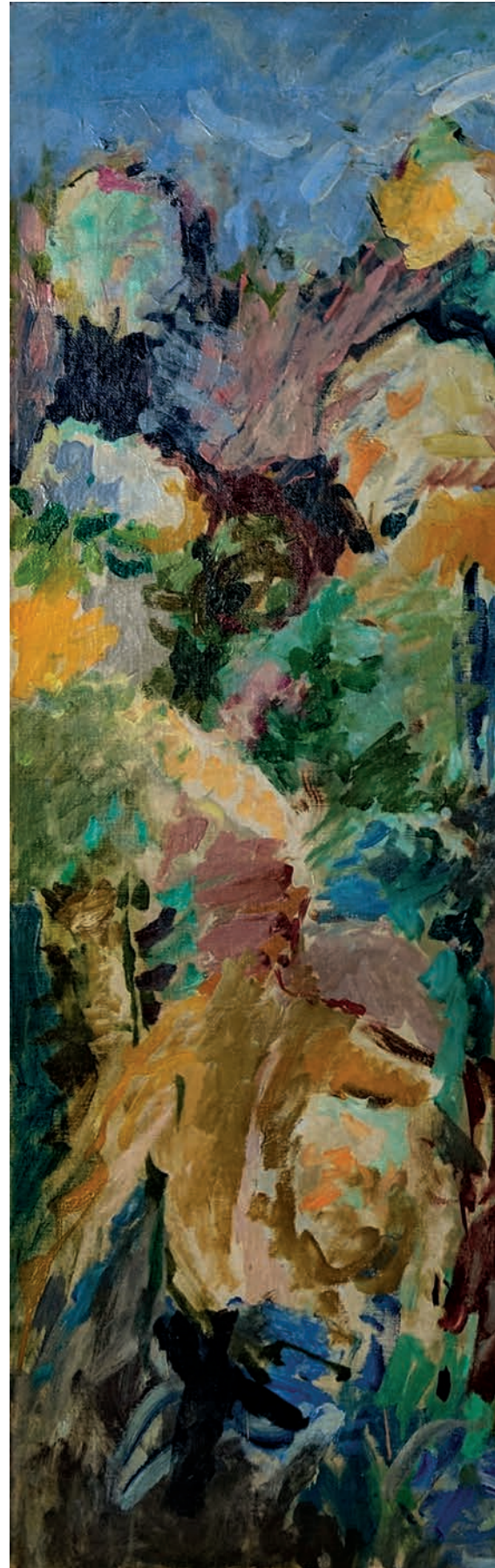
Provenance:  
The Collection of Milbank, Tweed, Hadley & McCloy

17  
**NELL BLAINE** American (1922–1996)  
*Figures in a Garden* (1956)

oil on canvas  
49 x 48 inches

\$5,000 – 8,000

Provenance:  
The Carrington Collection of Fine Art  
Poindexter Gallery









18



18

**JEROME MYERS** American (1867–1940)

*Untitled (east side study)*

pastel on paper

signed lower right

sight: 18 x 14 inches

frame: 26 ½ x 22 inches

\$500 – 800

Provenance:

Private Collection, New Jersey

ACA Heritage Gallery

19



19

**DONALD WYNN** American (b.1942)

*Untitled (open field and house)*

oil on canvas

signed lower right

18 ½ x 24 inches

\$300 – 500

Provenance:

The Collection of Wesley and Caroline Halpert





# LEROY NEIMAN

LOTS 20-26





**LEROY NEIMAN** American (1921–2012)

20

*Hialeah Race Track – Miami Florida (1964)*

acrylic, ink and graphite on paper

signed and dated

sheet: 18 x 24 inches

frame: 24 x 30 ½ inches

\$3,000 – 5,000

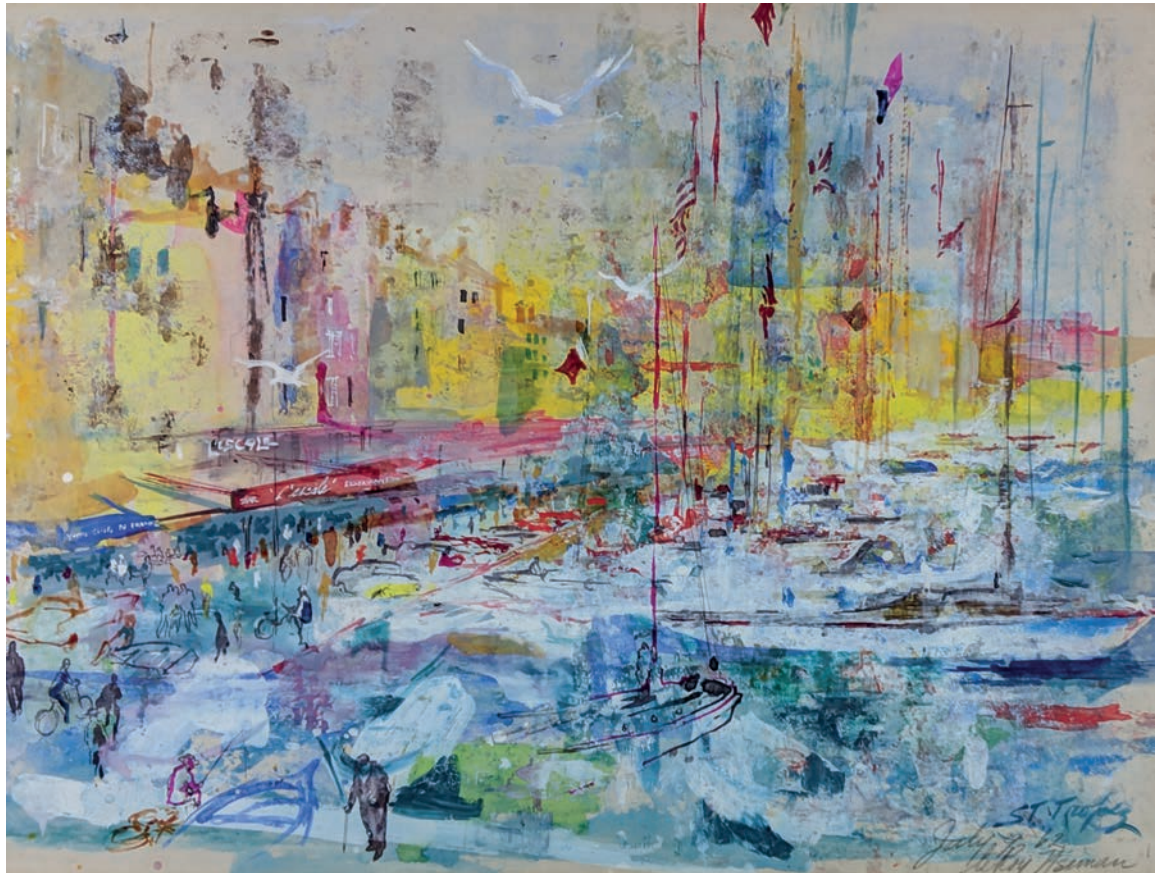
Provenance:

Private Collection, New Jersey

Hammer Galleries



21



22



21

*Saint Tropez* (1962)

mixed media on paper

signed lower right

sheet: 21 x 28 inches

frame: 26 ½ x 32 ¼

\$5,000 – 8,000

Provenance:

Private Collection, New Jersey

22

*Moscow* (1986)

chalk on paper

titled and signed lower right

sheet: 16 ½ x 21 ½ inches

frame 23 ¾ x 29 inches

\$3,000 – 5,000

Provenance:

Private Collection, New Jersey





**LEROY NEIMAN** American (1921–2012)

23

*Paddock at Longchamp* (1962)

watercolor on paper  
signed lower right  
sight: 14 x 19 inches  
frame: 20 x 25 ¼ inches  
\$3,000 – 5,000

Provenance:  
Private Collection, New Jersey  
Hammer Galleries

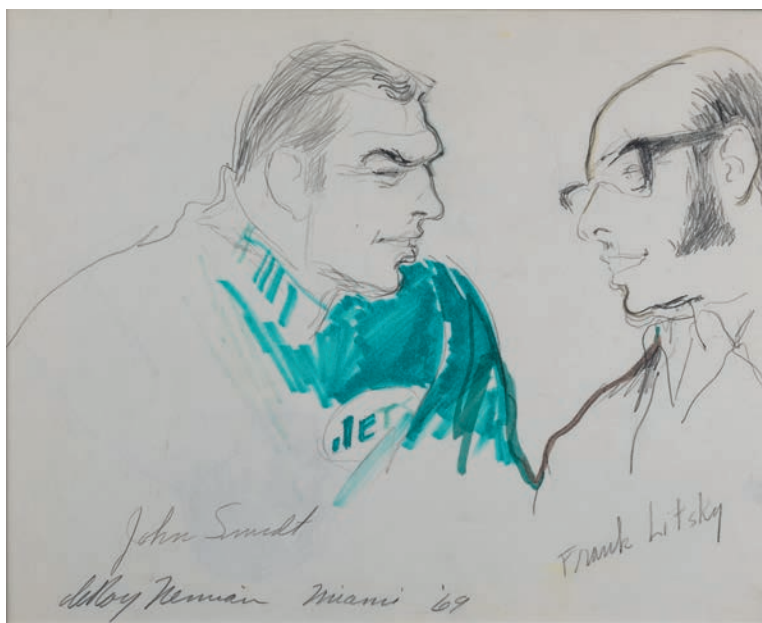
24

*Frank Litsky and John Schmitt* (1969)

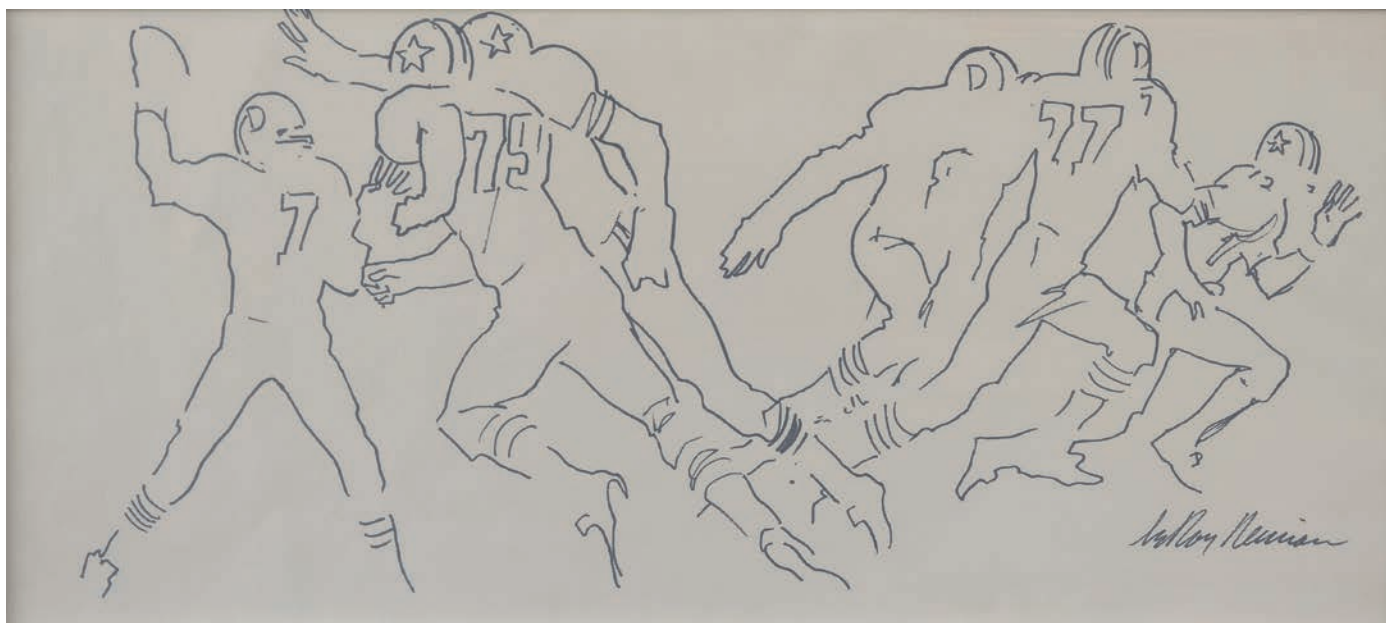
felt pen and graphite on paper  
signed lower left  
sight: 12 ½ x 15 ¾ inches  
frame: 14 x 17 inches  
\$300 – 500

Provenance:  
The Collection of Frank Litsky,  
acquired directly from the artist

24



25



25

*Cowboys vs. Broncos (Superbowl XII)* (1978)

ink on paper  
signed lower right  
sight: 11 x 25 ½ inches  
frame: 13 ½ x 27 ½ inches  
\$300 – 500

Provenance:  
The Collection of Frank Litsky,  
acquired directly from the artist

26

*Longchamp* (1960)

watercolor, ink and graphite on paper  
signed lower right  
sheet: 12 x 9 ½ inches  
frame: 17 x 14 ¼ inches  
\$2,000 – 3,000

Provenance:  
Private Collection, New Jersey

26





27



27

**WILLIAM MEYEROWITZ** American (1887–1981)

*Untitled (seaside village)*

oil and graphite on canvas over board

signed lower right

sight: 19 ¼ x 23 inches

frame: 25 x 23 ½ inches

\$1,000–1,500

Provenance:

Private Collection, New York

28



28

**THERESA BERNSTEIN** American (1895 – 2002)

*Untitled (harbor scene)*

oil on artist's board

signed lower right

sight: 13  $\frac{3}{4}$  x 18  $\frac{1}{2}$  inches

frame: 19  $\frac{1}{4}$  x 23  $\frac{3}{4}$  inches

\$1,000 – 1,500

Provenance:

Private Collection

29



29

**HAL ROBINSON** American (1867–1933)

*November on the Saw Mill River*

oil on canvas

signed lower right

sight: 9 ½ x 7 ½ inches

frame: 14 x 12 inches

\$300 – 500





30

**WILL HENRY STEVENS** American (1881–1949)  
*Untitled (houses and rocks)*

pastel on paper  
 signed lower right  
 sight: 19 ½ x 15 ½ inches  
 frame: 27 x 23 inches  
 \$3,000 – 5,000



# EDWARD WILLIS REDFIELD

LOTS 31-32



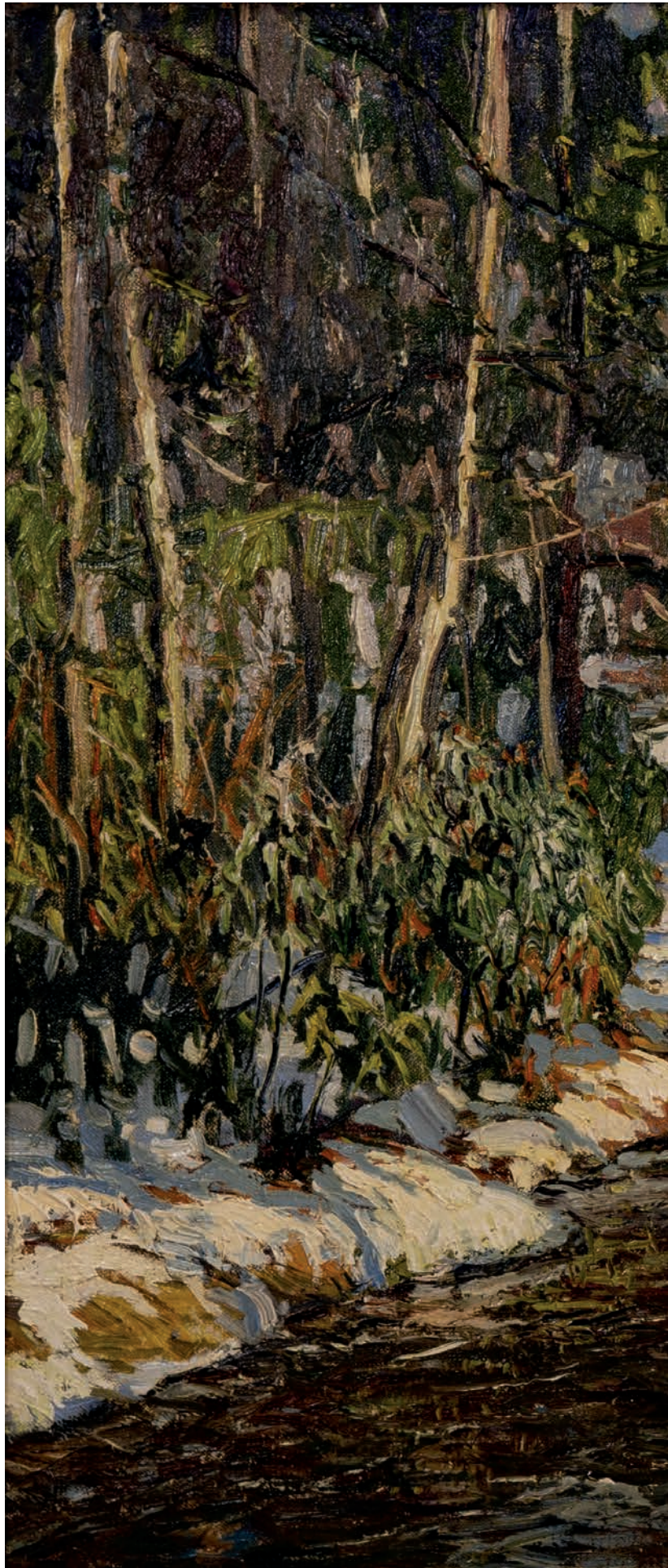
**31**  
**EDWARD WILLIS REDFIELD** American (1869–1965)  
*Woodland Brook* (ca. 1915)

oil on canvas  
 signed lower left  
 sight: 25 x 31 inches  
 frame: 33 x 38 ¾ inches  
 \$60,000 – 90,000

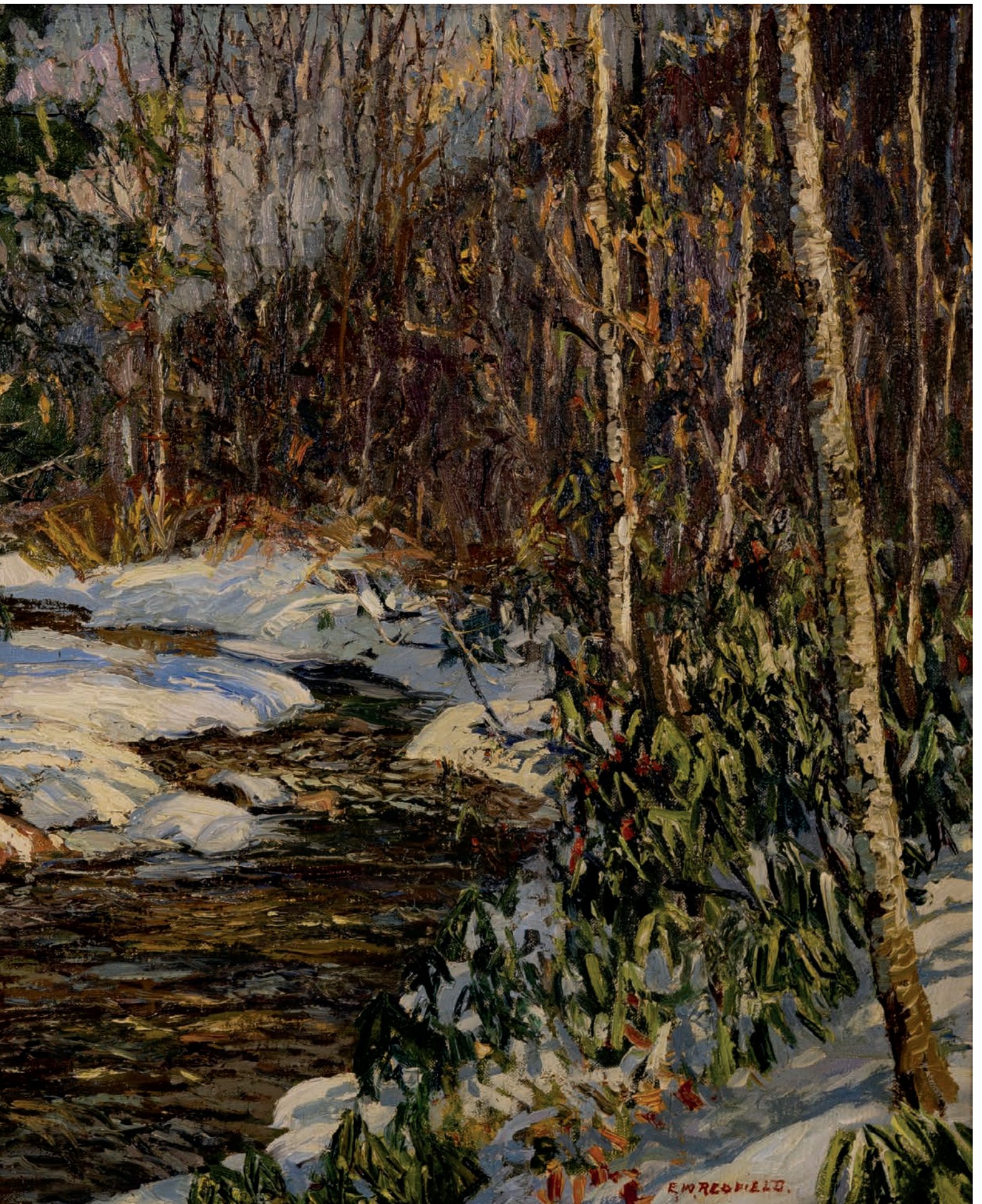
Provenance:  
 The Karlin Collection  
 acquired directly from the artist

*Woodland Brook*, ca. 1915 was executed near Redfield's home north of New Hope, Pennsylvania. Painted *en plein air* and in a single session, this work captures the sublime light of a sunny winter day. Known for his masterful snow-covered landscapes, Redfield braved the cold and the challenges of freezing paint to create his uniquely American Impressionist scenes. A work titled *Woodland Brook*, most likely the present painting, was shown at the *Special Exhibition of Work by Edward Redfield and Others*: Art Institute of Chicago (including paintings by Redfield, J.W. Alexander, W. Irvine, M. Sterne, and sculpture by C. Beach), December 12–1916–January 2, 1917, cat. no. 131.

This painting will be included in the forthcoming catalogue raisonné on Redfield by Dr. Tom Folk.







E. W. REDFIELD.









32

**EDWARD WILLIS REDFIELD** American (1869–1965)

*Summer Woodlands*

oil on canvas

signed lower left

sight: 20 ½ x 25 ½ inches

frame: 25 ¼ x 30 ½ inches

\$40,000–60,000

Provenance:

The Karlin Collection

acquired directly from the artist

Redfield's summer home was located in Boothbay Harbor Maine, where he worked throughout the summer and into early autumn. In Maine, he also painted on Monhegan Island, a boatride from Boothbay Harbor. Redfield, Robert Henri and Rockwell Kent were among the first artists to paint Monhegan. The island eventually became a popular destination for artists, and remains so today. *Summer Woodlands* was painted on one of the island's pathways leading to wooded areas.

This work will be included in the forthcoming catalogue raisonné on Redfield by Dr. Tom Folk.





**MARTHA WALTER** American (1875–1976)

**33**

*Untitled (Italian countryside)*

oil on paper

sight: 6 ½ x 5 ½ inches

frame: 11 ½ x 10 inches

\$3,000 – 5,000

Provenance:

Private Collection, New Jersey

Hammer Galleries

**34**

*Untitled (winter scene)*

oil on paper

sight: 5 ½ x 6 ½ inches

frame: 9 ½ x 12 inches

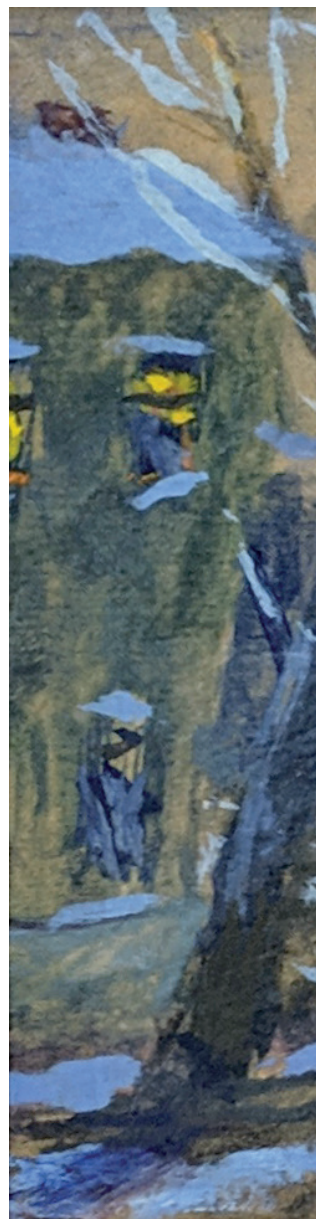
\$2,000 – 3,000

Provenance:

Private Collection, New Jersey

Hammer Galleries

34











**PÁL FRIED**  
LOTS 35-45

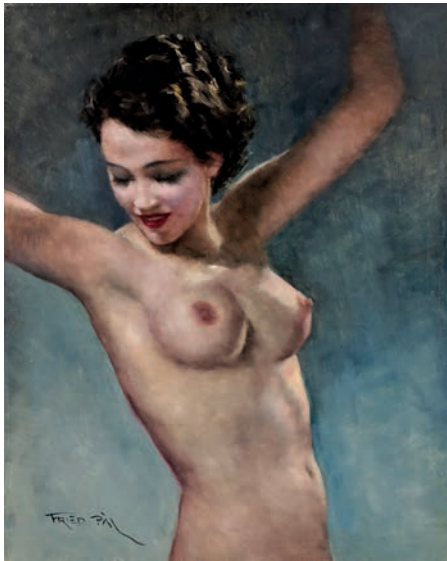
35

*Janine*

36

*Nude*

40

*Lizette*

41

*Violetta*

**PÁL FRIED** American/Hungarian (1893 –1976)

**LOTS 35–41**

oil on canvas  
signed lower left  
30 x 24 inches

\$800 –1,200



37



*Geraldine*

38



*Suzanne*

39



*Sabrina*

42



43





44



45



**PÁL FRIED** American/Hungarian (1893–1976)

**LOTS 42–45**

oil on canvas  
signed lower left

<b>42</b>	<b>43</b>	<b>44</b>	<b>45</b>
<i>Flamenco</i>	<i>Russian Ballet</i>	<i>Untitled (race track)</i>	<i>Untitled (rodeo)</i>
30 x 24 inches	30 x 24 inches	24 x 30 inches	24 x 30 inches
\$500 – 800	\$400 – 600	\$500 – 800	\$400 – 600







46

**MICHAEL THOMPSON** American (b. 1962)*Angela Lindvall*

gelatin silver print  
 signed and stamped verso  
 sheet: 20 x 16 inches  
 frame 28 x 21 ½ inches  
 \$800–1,200

Provenance:  
 The Vogel Collection

47

**MALICK SIDIBÉ** Malian (1936–2016)*Avec mon sac, bagues et bracelets* (1968/1998)

gelatin silver print  
 signed and dated (printed 1998)  
 image: 16 x 16 ¼ inches  
 sheet: 23 ½ x 19 ½ inches  
 \$2,500–3,500

Provenance:  
 The Vogel Collection



48

**MARIO SORRENTI** American/Italian (b.1971)*Untitled (nude)* (2000)

pigment print

signed and inscribed verso

sheet: 24 x 20 inches

frame: 33 x 28 inches

\$2,500 – 3,500

Provenance:

The Vogel Collection





49

**STEVEN SEBRING** American (b.1966)*Grace (blue nude)* (2002)

pigment print

signed lower right

sight: 20 x 16 inches

sheet: 26 1/4 x 22 inches

\$500 – 800

Provenance:

The Vogel Collection



50  
**BRUCE DAVIDSON** American (b.1933)  
 from *Los Angeles* 1964

gelatin silver print  
 signed verso  
 sight: 6 x 9 inches  
 frame 28 x 21 ½ inches  
 \$1,500–2,500

Provenance:  
 The Vogel Collection







51

**HELMUT NEWTON** German/Australian (1920–2004)  
*Sylvia in My Studio* (1984)

gelatin silver print  
 signed verso; print 1, edition #B  
 image: 10  $\frac{7}{8}$  x 10  $\frac{7}{8}$  inches  
 sheet: 15  $\frac{7}{8}$  x 12 inches  
 \$3,000–5,000

Provenance:  
 A Singular Manhattan Collection

52

**HORST P. HORST** American (1906–1999)  
*Male Nude, Frontal, NY* (1952)

platinum–palladium print  
 signed verso and numbered 4/25  
 image: 18  $\frac{1}{4}$  x 15 inches  
 sheet: 21  $\frac{3}{4}$  x 18 inches  
 \$3,000–5,000

Provenance:  
 A Singular Manhattan Collection







53

**GARY KELLEY** American (b. 1945)*Untitled (woman in robe)*

oil on canvas

signed lower right

sight: 28 ½ x 34 ½ inches

frame: 30 x 37 inches

\$1,000 – 1,500





54

**GUSTAV BLACHE III** American (b.1977)  
*Two matched still lifes (oranges)* (2004)

oil on canvas  
 sight: 4 x 5 ½ inches (each)  
 frame: 15 ½ x 14 inches (each)  
 \$500 – 800

Provenance:  
 Private Collection, Connecticut

55



55

**JACQUELINE HUMPHRIES** American (b. 1960)

*Untitled* (1992)

oil on linen

signed and dated verso

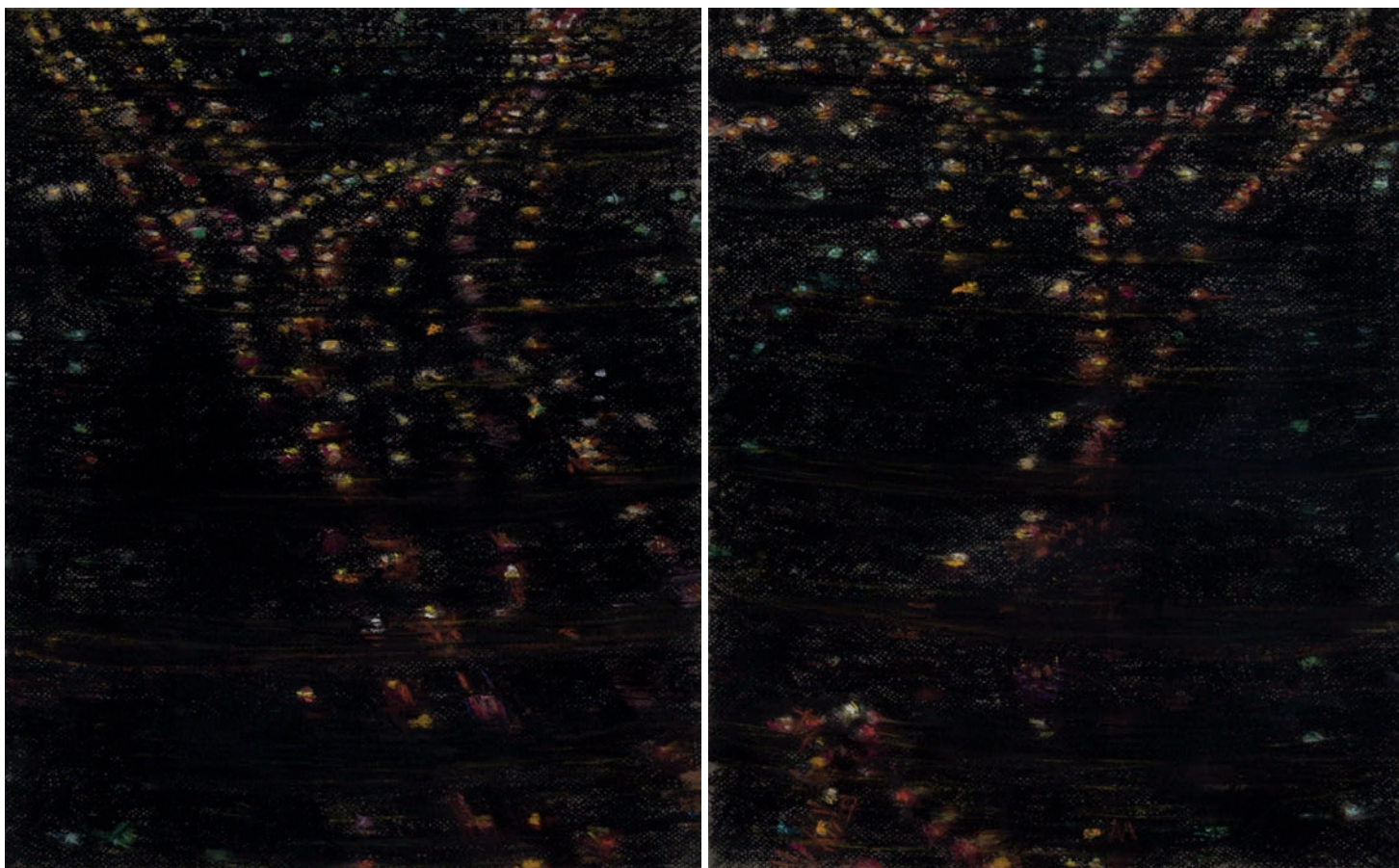
14 x 14 inches

\$1,000 – 2,000

Provenance:

The Collection of Anthony Haden-Guest





56

**YVONNE JACQUETTE** American (b.1934)*Queens Lights at Night* (1980)

color pastel (diptych)

labeled verso

two sheets: each 17 x 13  $\frac{3}{4}$  inchesframe: 31  $\frac{3}{4}$  x 45  $\frac{3}{4}$  inches

\$500 – 800

Provenance:

Private Collection, New York

57

**MANOUCHER YEKTAI** American/Iranian (b.1921)

*Positano Landscape #3* (1958)

oil on canvas

signed and dated lower right

39 x 39 inches

\$40,000 – 60,000

Provenance:

The Carrington Collection of Fine Art

Poindexter Gallery

*Positano Landscape #3*, a highlight of Yektai's 1959 exhibition at Poindexter Gallery is an expressive abstraction of the Italian countryside and a masterwork. "From his work in Positano ... he has uncovered a vein of Lyrical Expressionism... bringing Soutine up to date" (*Arts Magazine*, 1959).

Manoucher Yektai's career spans eight decades and is thoroughly detailed on [Yektai.com](http://Yektai.com). "For years [he] worked with his delicately balanced combinations of abstraction and representation. In his attempt to highlight the virtues of both the world-affirming School of Paris representationalism and the paint-as-presence mysticism of New York School reductionism, Yektai has been compared by critics to Nicolas de Stael, Richard Diebenkorn, Elaine de Kooning, Frank Auerbach, Henri Matisse, Hans Hoffman, Leon Kossof, Asger Jorn, Karel Appel, Pierre Bonnard, and others." ([Yektai.com](http://Yektai.com))







58



58

**HYDE SOLOMON** American (1911–1982)  
*Lake Country #6* (1964)

oil on canvas  
signed and dated upper right  
56 x 60 inches

\$2,000 – 4,000

Provenance:  
The Carrington Collection of Fine Art  
Poindexter Gallery

59

**LUKE GRAY** American (b.1961)  
*Self Organization* (1996)

oil on canvas  
signed verso  
44 x 44 inches

\$500 – 800

Provenance:  
Private Collection, New York  
Snyder Fine Art





60



60

**DOROTHY DEHNER** American (1901–1994)

*Untitled* (1992)

watercolor

signed and dated upper left

sheet: 9 1/4 x 12 3/4 inches

frame: 16 X 19 inches

\$600 – 900

Provenance:

The Collection of Milbank, Tweed, Hadley & McCloy





61

**PABLO PICASSO** Spanish (1881–1973)*Bain de minuit, femmes surprises par un marin hilare* (1971)

etching on Rives BFK  
 numbered 26/50 and artist's stamped signature  
 from La Suite 156, 1971 (Bloch 1978; Baer 1987)  
 published by Galerie L. Leiris, Paris  
 image: 14 x 19 inches  
 frame: 26 ½ x 30 ½  
 \$4,000 – 6,000

Provenance:  
 Private Collection, New York

62



**62**  
**ALEXANDER LIBERMAN** American (1912 –1999)  
*Untitled* (1975)

gouache  
 signed and dated lower right corner  
 sheet: 41 ½ x 26 inches  
 frame: 43 ½ x 29 ¼ inches  
 \$500 – 800

Provenance:  
 Private Collection, Little Deer Isle, Maine  
 Makler Gallery

**63**  
**FRED BULL** American (b. 1942)  
*City View* (1974)

acrylic on canvas  
 signed and dated lower right  
 66 ½ x 36 inches

\$500 –1,000

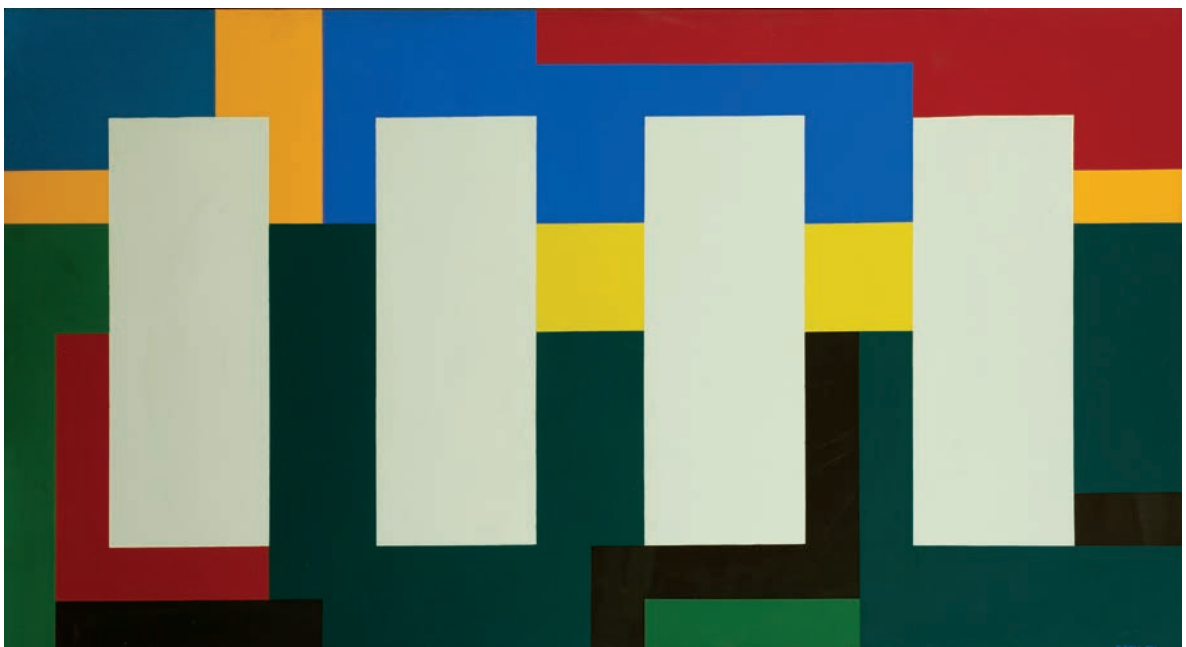
**64**  
**DONALD KAUFMAN** American (b.1935)  
*Albuquerque* (1969)

oil on canvas  
 titled, dated and signed on top flap  
 30 ¼ x 30 ¼ inches

\$700 –1,000

Provenance:  
 Private Collection, Little Deer Isle, Maine

63













65

**ROBERT GOODNOUGH** American (1917 – 2010)

*Colors on Blue* (1976)

oil and acrylic on canvas

signed verso

40 x 52 inches

\$3,000 – 5,000

Provenance:

Private Collection, Greenwich, Connecticut







# ROBERT NATKIN

LOTS 66-69





66

**ROBERT NATKIN** American (1930-2010)

*Between the Sapphire and Sound* (1967)

oil on canvas

signed bottom, dated and titled verso

72 x 72 inches

\$5,000 – 8,000

Provenance:

The Carrington Collection of Fine Art

Poindexter Gallery

67

**ROBERT NATKIN** American (1930-2010)

*Climb (Interior Light Series)*

oil on canvas

signed lower right

57 x 37 1/4 inches

\$3,000 – 5,000

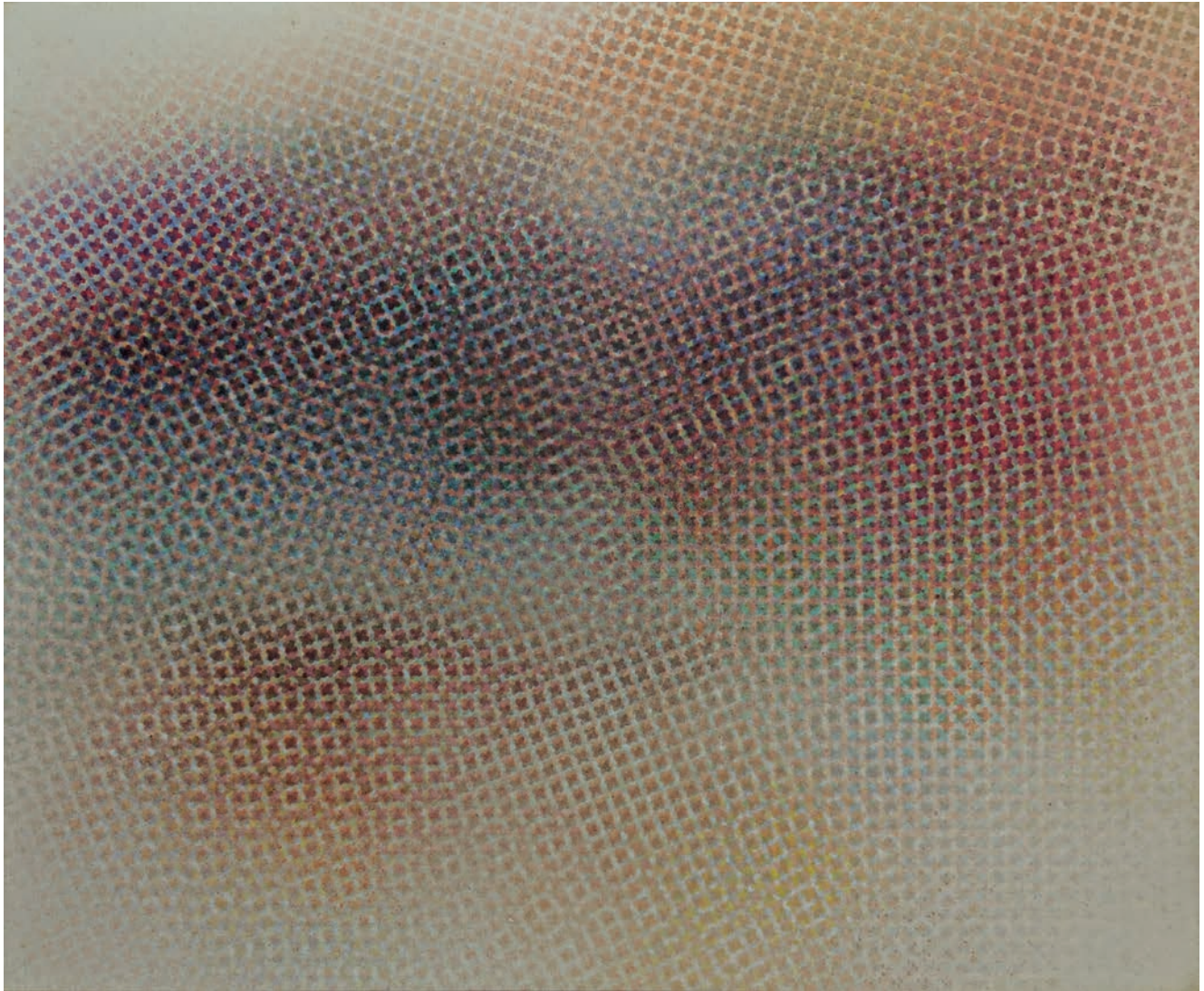
Provenance:

Private Collection, Little Deer Isle, Maine









68

**ROBERT NATKIN** American (1930-2010)  
*Evanescent Landscape #4* (1977)

oil on canvas  
 titled and dated verso  
 30 1/2 x 37 inches

\$2,000 – 3,000

Provenance:  
 Private Collection, Little Deer Isle, Maine



69

**ROBERT NATKIN** American (1930-2010)

*Untitled* (1978)

oil on canvas  
signed bottom  
33 x 31 inches

\$2,000 – 3,000

Provenance:  
Private Collection, Little Deer Isle, Maine

69





70

**DAVID PORTER** American (1912 – 2005)*Untitled (mountain)* (1992)

mixed media on wood panel

signed lower left

sight: 10 x 7 ¼ inches

frame: 11 ¼ x 8 ¾ inches

\$200 – 400



71



72



**71**  
**ANDRES SERRANO** American (b.1950)  
*Hooded Warbler II* (2000)

Cibachrome print  
signed verso  
sheet: 24 x 20 inches  
from the BAM Portfolio  
\$400 – 600

**72**  
**VERYL GOODNIGHT** American (b.1947)  
*Bear* (1977)

bronze  
signed and numbered  
sculpture: 7 x 12 x 6 inches  
base: 1 x 13 x 8 inches  
\$400 – 600

Provenance:  
Private Collection, New York



73  
**BILL WORELL** American (b.1936)  
*Shaman* (1992)

bronze  
signed and numbered  
sculpture: 16 x 19 x 3 inches  
base: 4 x 8 x 7 1/2 inches  
\$500 – 800

Provenance:  
Private Collection, New York





74

**GENE SPECK** American (b.1937)*Sundown of Gold*

oil on artist's board

signed lower left

sight: 12 x 9 inches

frame: 20 ½ x 17 ½

\$600 – 900

Provenance:

Private Collection, New York





**NEIL WELLIVER**

LOTS 75-80



75

**NEIL WELLIVER** American (1929 – 2005)*Untitled (snowy landscape)* (1999)

oil on linen

signed verso

sight: 11 ½ x 11 ¾ inches

frame: 14 ½ x 14 inches

\$5,000 – 8,000

Provenance:

Private Collection, Little Deer Isle, Maine

acquired directly from the artist



76



76

**NEIL WELLIVER** American (1929 – 2005)  
*From Zeke's, Maine Landscape*

lithograph  
 signed and numbered 143/150  
 image: 19 ½ x 25 ½ inches  
 sheet: 21 ½ x 29 ¾ inches  
 \$500 – 800

Provenance:  
 The Collection of Milbank, Tweed, Hadley & McCloy

77

**NEIL WELLIVER** American (1929 – 2005)  
*Immature Great Blue Heron*

etching with aquatint  
 signed and numbered 59/60  
 image: 24 x 21 ½ inches  
 sheet: 30 ½ x 27 ½ inches  
 \$800 – 1,200

Provenance:  
 The Collection of Milbank, Tweed, Hadley & McCloy

77











**NEIL WELLIVER** American (1929 – 2005)

**78**  
*Si's Hill*

color screenprint  
signed and numbered 100/144  
sheet: 38 1/2 x 38 inches  
frame: 47 x 46 3/4 inches  
\$1,000 – 1,500

Provenance:  
The Collection of Milbank, Tweed, Hadley & McCloy

**79**  
*Salmon*

etching with aquatint  
signed and numbered 18/40  
image: 21 3/4 x 29 1/4 inches  
sheet: 29 1/2 x 36 1/4 inches  
\$500 – 800

Provenance:  
The Collection of Milbank, Tweed, Hadley & McCloy

**80**  
*Untitled (beaver pond)*

oil on canvas  
signed on flap  
sight: 23 3/4 x 23 3/4 inches  
frame: 27 1/2 x 27 1/2 inches  
\$10,000 – 15,000

Provenance:  
Private Collection, Little Deer Isle, Maine  
acquired directly from the artist



81

**FREMONT ELLIS** American (1897–1985)*Summer Aspen*

oil on artist's board

signed lower left

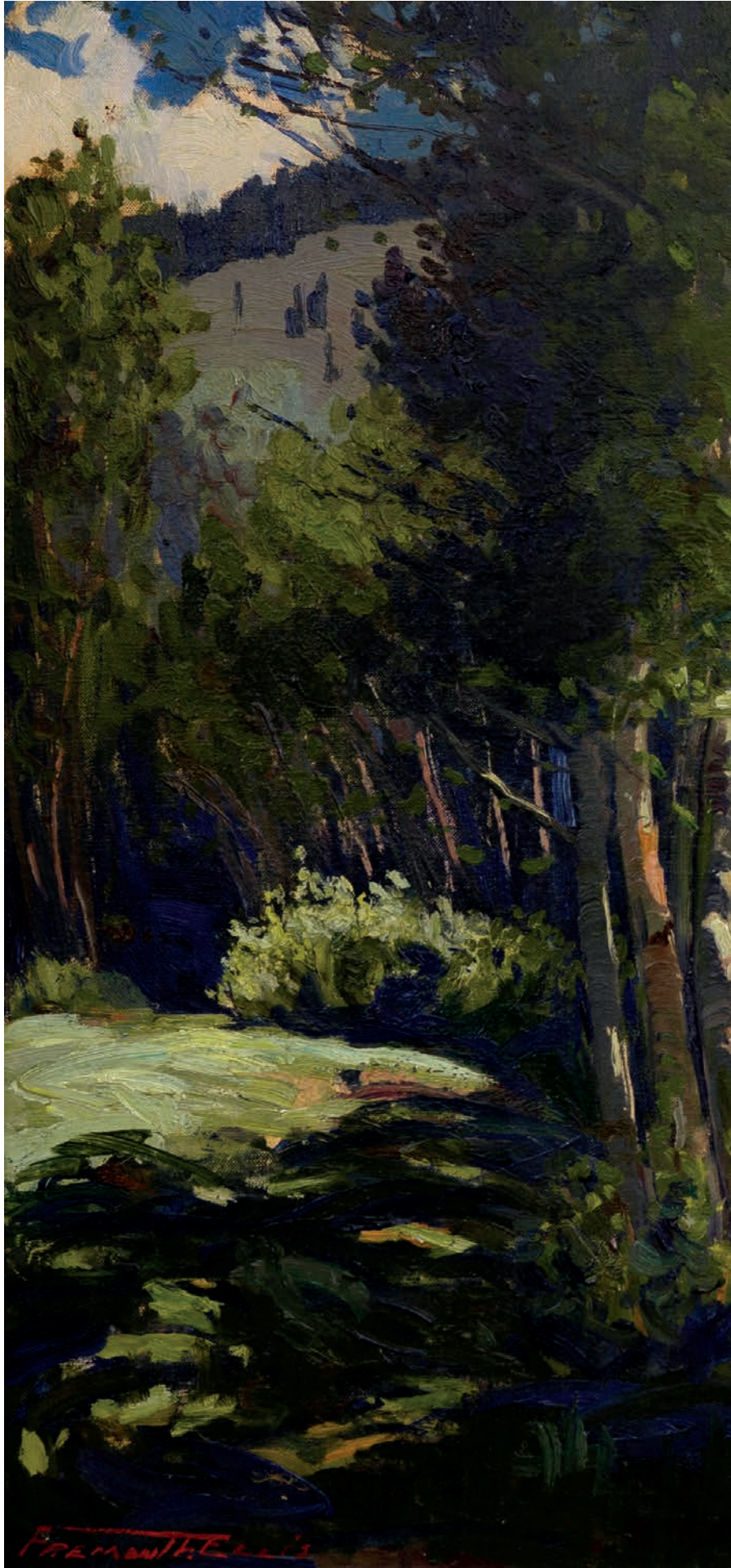
sight: 22 x 30 inches

frame: 26 ½ x 33 ½ inches

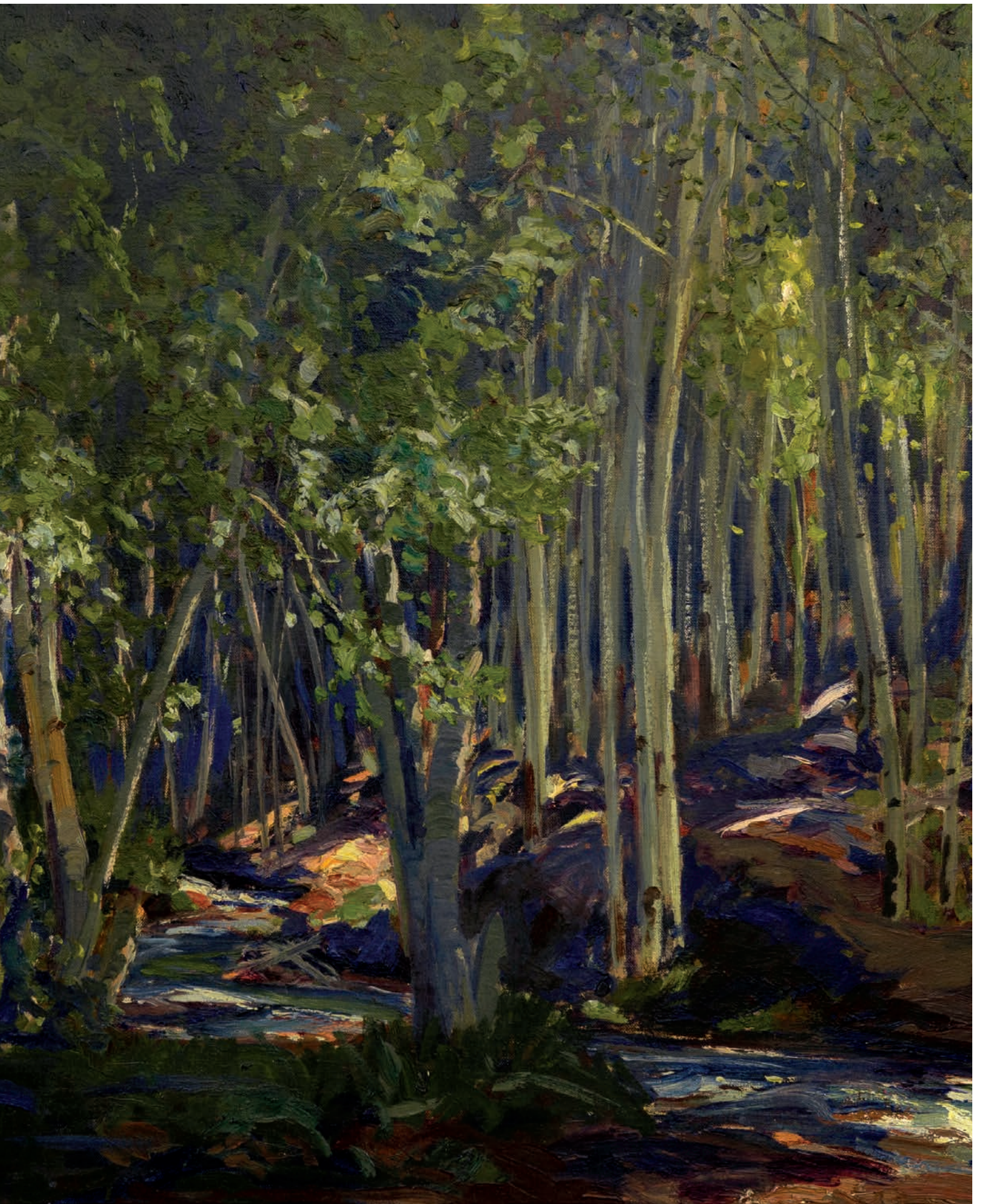
\$5,000–10,000

Provenance:

Fenn Gallery (from the property of John K. Kirk)









82



83



84



85



# **RICHARD CHIRIANI** American (b.1942)

82

*Behind Sippiwissett Marsh* (1990)

gouache on paper  
 labeled verso  
 sheet: 10 x 27 ¼ inches  
 frame: 18 ½ x 36 inches  
 \$500 – 800

83

*Head of Ayr, Scotland* (1983)

gouache on paper  
 labeled verso  
 sheet: 8 x 11 inches  
 frame: 14 ¼ x 18 ½ inches  
 \$400 – 600

84

*Loch Sha Ula, Duress, Scotland* (1983)

gouache on paper  
 labeled verso  
 sheet: 8 x 11 inches  
 frame: 14 ¼ x 18 ½ inches  
 \$400 – 600

85

*Looking Towards Nobska Point* (1984)

alkyd on paper  
 signed lower right  
 canvas: 12 ¾ x 33 inches  
 frame: 13 ½ x 34 inches  
 \$500 – 800

Provenance:  
 The Collection of Wesley and Caroline Halpert.  
 Tibor De Nagy Gallery





86  
**THOMAS CONNOLLY** American (XX-XXI)  
*Engine 326* (2003)

oil on panel  
 signed and lower left  
 sight: 30 x 22 inches  
 frame: 31 ½ x 23 ¼ inches  
 \$800–1,200

Provenance:  
 Private Collection, New York



87

**JAMES MONTGOMERY FLAGG** American (1877–1960)*Young Couple*

ink and wash on paper

signed lower left

sight: 27 x 21 inches

frame: 31 ¼ x 25 ¼ inches

\$3,000 – 5,000

Provenance:

Private Collection, New York



88



89



88

**ANSEL ADAMS** American (1902–1984)

*Cathedral Spires and Rocks, Late Afternoon, Yosemite National Park, California* (1992)

gelatin silver print  
 editioned by Alan Ross (from the original Ansel Adams negative)  
 titled and numbered B verso  
 sight: 7 ¼ x 9 ¼ inches  
 frame: 14 x 17 inches  
 \$400–600

Provenance:  
 Private Collection, Little Deer Isle, Maine

89

**TRUDE FLEISCHMANN** American (1895–1990)

*A. Toscanini & Daughter, N.Y.* (1953)

vintage gelatin silver print  
 stamped verso  
 9 ½ x 7 ½ inches

\$800–1,200

Provenance:  
 A Singular Manhattan Collection  
 Galerie Johannes Faber



90

**FRANK ROBBINS** American (1917–1994)*Untitled (New York Stock Exchange)* (1955)

oil on canvas

signed lower right

sight: 31 ½ x 45 ½

frame: 41 ¼ x 55 ½ inches

\$800–1,200

Provenance:

Private Collection, New York





91

**FRANK ROBBINS** American (1917–1994)*Untitled (burlesque)* (1961)

oil on canvas

signed lower left

sight: 47  $\frac{3}{4}$  x 31  $\frac{1}{4}$  inchesframe: 56  $\frac{3}{4}$  x 36  $\frac{1}{4}$  inches

\$800–1,200

Provenance:

Private Collection, New York





93



92

**CHAIM GROSS** American (1904 – 1991)  
*Standing Woman* (1949)

wood  
signed and dated on plinth  
25 ½ x 5 x 5 inches

\$800 – 1,200

Provenance:  
The Schulhof collection

93

**JAMES RITCHIE** Canadian (b.1929)  
*Untitled*

bronze on marble  
signed and numbered 4/8  
bronze: 6 x 2 x 2 inches  
base: 2 x 2 x 2 inches  
\$500 – 800

Provenance:  
Private Collection, New York



94

**CHARLES CORDIER** French (1827–1905)*Saïd Abdullah and Vénus Africaine*

bronze with natural patina

*Saïd Abdullah*: 17 x 10 ½ x 7 inches

stamped (CH. Cordier)

*Vénus Africaine*: 16 ½ x 9 x 6 inches

stamped (1851 Cordier)

\$10,000–15,000

Provenance:

The Collection of Frank Litsky









VIEW ADDITIONAL LOTS ONLINE AT:  
[capsuleauctions.com](http://capsuleauctions.com)

CAPSULE





# CAPSULE

## TERMS OF SALE

Bidding in any manner at any of Our auctions or purchasing at any of Our sales indicates that You have read, understood and accepted the following terms and conditions of sale ("Terms and Conditions"). By so bidding and/or purchasing You agree to comply with and be bound by these Terms and Conditions.

Definitions. The following definitions apply to these Terms and Conditions:

- (a) "Bidder", "You" and/or "Your" refer to a person or entity who bids at an auction or purchases at a sale conducted by CAPSULE GALLERY INC..
- (b) "Buyer's Premium" is a payment due CAPSULE GALLERY INC. from a Purchaser equal to 25% of the Successful Bid Amount of a Lot at auction or the purchase price of an Item in a sale.
- (c) "Consignor" refers to a person who has consigned Property to CAPSULE GALLERY INC. for auction or sale.
- (d) "CAPSULE GALLERY INC.", "We", "Us" and/or "Our" refer to Capsule Gallery, Inc.
- (e) "Property", "Lot" and/or "Item" refer to one or more pieces of personal property identified for auction or sale by CAPSULE GALLERY INC..
- (f) "Purchaser" refers to a person who is determined by CAPSULE GALLERY INC. to be the successful Bidder for Property at an auction or who purchases Property at a sale.
- (g) "Successful Bid Amount" is the highest bid for Property acknowledged by CAPSULE GALLERY INC. at an auction.
- (h) "Total Purchase Price" is the Successful Bid Amount at an auction or the purchase price at a sale plus the Buyer's Premium. In addition to the Total Purchase Price other fees, charges and taxes may apply and are due and payable with the Total Purchase Price.

No Representation, Warranty or Guaranty; Duty to Inspect. All Property is sold in "ASIS" / "WHERE-IS" condition and neither CAPSULE GALLERY INC. or the Consignor makes any representation, warranty or guaranty, express or implied, about any Property as to authenticity, origin, description, provenance, condition, attribution, age, date, value, restoration, repair or any other matter, including merchant ability or fitness for a particular purpose. No catalog, written material, photograph or statement by CAPSULE GALLERY INC., its employees or agents, shall be deemed a representation, warranty or guaranty as to any Property described or portrayed. Estimates of value provided in any catalog represent Our opinion of a range of possible values. Actual prices realized may fall below or above this range. Any indications of measurement are approximate. Prospective Bidders are responsible for making all inspections of and determinations about Property, in person or through an agent, before bidding.

Withdrawal. We reserve the right to withdraw any Property from auction or sale at any time for any reason.

Payment, Pickup, Loading and Storage. Payment of the Total Purchase Price of Property plus applicable fees, charges and taxes must be made in full by wire transfer or other acceptable method within seven (7) days after the date of sale of said Property. After approval by CAPSULE GALLERY INC., which it may withhold in its discretion, payment in an amount less than \$5,000.00 may be made by acceptable credit card. Property will not be released to You or Your agent until full payment has been made as provided above. Purchased Property must be picked up within fourteen (14) days after the date of sale of said Property. CAPSULE GALLERY INC. will not be responsible for packing purchased Items or arranging shipping. Packing, lift- ing, loading and moving of Property at CAPSULE GALLERY INC.'s gallery (or elsewhere) is the sole responsibility of the Purchaser. CAPSULE GALLERY INC.'s personnel may, as a courtesy, offer assistance in packing, lifting, loading and/or moving of Property, however neither CAPSULE GALLERY INC. nor its employees or agents shall be liable for any damage or injury that occurs in handling, packing, lifting, loading, moving or transporting of Property whether such damage or injury occurs at CAPSULE GALLERY INC.'s gallery or elsewhere (as, for example, during transit). A storage fee of \$10.00 per Lot per day begins accruing on the 15th day after the date of sale.

Remedies for Nonpayment. If a Purchaser fails to pay the Total Purchase Price of Property plus applicable fees, charges and taxes in full by wire transfer or other acceptable method within seven (7) days after the date of sale, in addition to other remedies available to Us and the Consignor by law, We may retain as damages all payments made by the Purchaser and may hold the Purchaser liable for all sums due together with costs of collection, including attorneys' fees. In addition to such remedy We may at Our option (a) cancel the sale and/or (b) resell the Property at public auction or by private sale without reserve, and the Purchaser will be liable for any deficiency, handling charges, expenses of both sales, Our commission on both sales at Our regular rates, all other fees and charges due hereunder, and all other costs and expenses, including attorneys' fees and incidental damages. Any Purchaser defaulting hereunder will be deemed to have granted Us a security interest in, and We may maintain as collateral security for such Purchaser's obligations to Us, any Property in Our possession owned by such Purchaser. We shall have all of the rights afforded a secured party under the New York Uniform Commercial Code with respect to such Purchaser. We reserve the right to hold Property purchased at an auction or sale until payment has been made in full by wire transfer. Payment will not be deemed to have been made until We have received payment in full of the Total Purchase Price of Property plus applicable fees, charges and taxes by wire transfer or other acceptable method.

Multiple Auction Bidding Platforms and Methods. CAPSULE GALLERY INC. conducts auctions through multiple auction bidding platforms. A Bidder may participate in CAPSULE GALLERY INC.'s auctions in person at CAPSULE GALLERY INC.'s gallery, by telephone, by submission of written order or online using CAPSULE GALLERY INC.'s auction bidding platform or other auction bidding platforms.

Bidding, Right to Reject Bids and Disputes. If We decide that a bid is an insufficient amount, We may reject the bid and/or remove the Property from sale. The highest Bidder acknowledged by CAPSULE GALLERY INC. will be the Purchaser. In the event of any question regarding a bid or other dispute, We will have sole and final discretion to determine the Purchaser and to resolve all other elements of the transaction. We may withdraw the Property from auction or sale and may re-offer it at our discretion. We are not responsible for any acts, errors or omissions relating to bids or other elements of the transaction.

Recognition of Purchaser. After CAPSULE GALLERY INC.'s indication that a Lot has been sold, ownership rights to the Lot will pass to the Purchaser upon fulfillment by such Purchaser of all the conditions set forth herein. At the conclusion of bidding for a specific Lot, the Purchaser (a) assumes full risk and responsibility for the Lot, and (b) is obligated to pay the Total Purchase Price of the Lot.

Sales Tax. Unless exempt by law as evidenced by a valid resale certificate, a Purchaser will be required to pay New York sales tax on the Total Purchase Price. Right to Publicize. CAPSULE GALLERY INC. reserves the right to retain, publish and use for any purpose (including publicity), and to disclose to whomever CAPSULE GALLERY INC. elects, any information, photographs and written materials relating to Property. CAPSULE GALLERY INC. may exercise said rights before, during or after an auction or sale.

Reserve. Some Lots may be subject to a reserve ("Reserve"), which is the confidential minimum price below which a specific Lot will not be sold. A Reserve may be agreed upon between CAPSULE GALLERY INC. and the Consignor or it may be established by CAPSULE GALLERY INC. in its sole discretion. CAPSULE GALLERY INC. may implement a Reserve by opening the bidding process on behalf of the Consignor and then CAPSULE GALLERY INC. may bid on the Lot until the amount of the Reserve has been reached. If CAPSULE GALLERY INC. has an ownership interest in a Lot, CAPSULE GALLERY INC. may bid up to the Reserve to protect such interest. If CAPSULE GALLERY INC. decides that any opening bid is below the Reserve of the Lot, CAPSULE GALLERY INC. may reject the bid and/or withdraw the Lot from auction.

Agency. Property offered for sale by CAPSULE GALLERY INC. is offered in CAPSULE GALLERY INC.'s capacity as agent for the owner of the Property. The sale of Property occurs from the owner of the Property to the Purchaser.

Deposit. In certain instances, CAPSULE GALLERY INC. may require that a prospective Bidder pay to CAPSULE GALLERY INC. a deposit in order to place a bid on Property.

Limit of Liability. In no event will We be liable to a Purchaser for any reason for an amount that exceeds the portion of the Total Purchase Price actually paid.

Time of the Essence. Time is of the essence with respect to Your obligations under these Terms and Conditions.

Severance Provision. In case any one or more of the provisions contained in these Terms and Conditions shall, for any reason, be held to be invalid, illegal or unenforceable in any respect, these Terms and Conditions shall be construed as if such invalid, illegal or unenforceable provision(s) had never been contained herein.

Governing Law. These Terms and Conditions shall be governed by New York law under the jurisdiction of the courts of New York.

Modification. CAPSULE GALLERY INC. reserves the exclusive right to waive or modify these Terms and Conditions.





## Capsule Bid Form

- ☐ Absentee Bid  
☐ Phone Bid

# CAPSULE

GALLERY AUCTION

Admin use

Paddle #

☐ Confirmed

NAME	RESALE	STATE
ADDRESS	PHONE	
CITY, ST, ZIP	ALTERNATE #	
EMAIL	PHOTO ID	
CREDIT CARD NUMBER	EXP. DATE	CVV

**Lot #****Title and Description****Absentee or  
Contingency Phone Bid**  
(Excluding buyer's premium)


By signing this form below, the signer (herein the "Bidder") indicates that the Bidder has read, understood and accepted the terms and conditions of sale (herein "Terms and Conditions") of Capsule Gallery, Inc. (herein "CAPSULE") as set forth on CAPSULE's website, or as otherwise made available to the Bidder. The Bidder agrees to comply with and be bound by the Terms and Conditions.

The Bidder hereby requests and authorizes CAPSULE to place the bids set forth above on behalf of the Bidder. The Bidder understands and agrees that CAPSULE will place the bids on behalf of the Bidder as a courtesy and that CAPSULE shall not be responsible for any error, omission or failure in the execution of bids. The Bidder understands that CAPSULE conducts auctions through multiple bidding platforms using multiple methods. In the event of any dispute or question regarding bids, CAPSULE will have sole and final discretion to determine the Purchaser. At the discretion of CAPSULE, the credit card information submitted on this form may be used to process payment of all purchases plus the 25% buyer's premium as a credit card charge if less than \$5,000.00.

**25% BUYER'S PREMIUM APPLIES TO ALL PURCHASES.**

Signature:

Date





[CAPSULEAUCTIONS.COM](https://capsuleauctions.com)