

The Private Collection of Joseph Rondina

New York
June 29, 2022



CAPSULE

**‘Inanimate objects can
exert an influence just as
surely as people can’**

— Joseph Rondina



CAPSULE presents:

The Private Collection of Joseph Rondina

Auction

Wednesday, June 29th, 2022

Two sessions

Asian Art, 10am

Antiques and Fine Art, 2pm

Exhibition

Capsule Gallery

Reception, June 23rd 5—8pm

Exhibition, June 24th and 25th, 11—3pm

508 West 26th Street, New York, NY 10001

CAPSULE AUCTIONS
INQUIRIES / INFORMATION

General Information
info@capsuleauctions.com

Bidder Registration
bids@capsuleauctions.com

Consignment Inquiries
consign@capsuleauctions.com

Payments and Shipping
admin@capsuleauctions.com
Phone: 212-353-2277

Location
508 West 26th Street
New York, NY 10001

Consignment Coordinator
Chelsea Rogers
chelsea@capsuleauctions.com

Registrar
Ellen Song
ellen@capsuleauctions.com

Gallery Director
Tara O’Toole
tara@capsuleauctions.com

Partners
Nicholas Thorn
nick@capsuleauctions.com

Simon Baranoff
simon@capsuleauctions.com

CAPSULE

Capsule is an innovative boutique auction house presenting curated art sales in New York City. Auctions are conducted live and online from our state-of-the-art exhibition space in the Chelsea Arts District.

The buyer's premium for each lot purchased is 25% on capsuleauctions.com

Phone bids may be arranged until 4 pm EDT on the day prior to the sale. Absentee bids are accepted until one hour before the sale.

Condition reports, as well as the most up-to-date cataloging are available online. If you require additional information to inform your bidding, contact the gallery.

Please note, we are glad to provide you with our opinions of condition, however, all works are sold according to our Terms of Sale which can be found in this catalog and online at capsuleauctions.com.

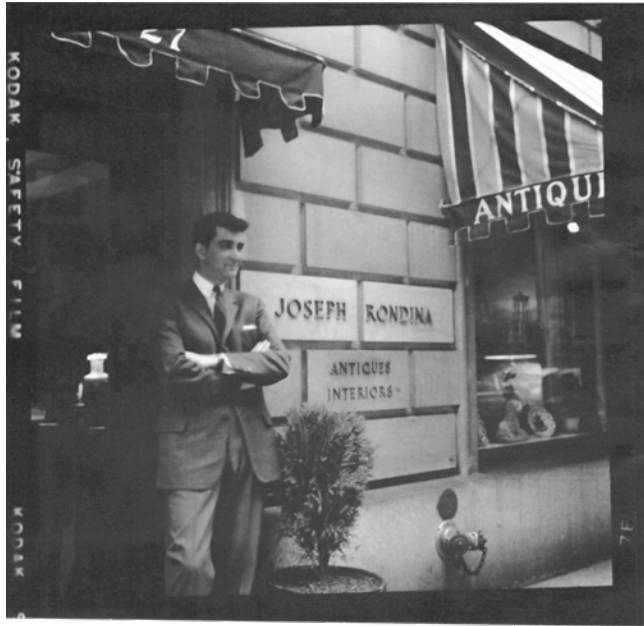
Catalog credits:
Art Director, Andrew Sroka; Lead Cataloger, Annika Stridh;
Photographer, Arthur Axis; Assistant Photographer, Adelaide Steinfeld

Special thanks to:
Don McNair, Linda Jones, and Nancy Luckwaldt

cover images: courtesy of Andrew Federico

JOSEPH RONDINA

1927 – 2022



I first became acquainted with the internationally renowned dealer Joseph Rondina in the spring of 1995. I was completing my bachelor's degree and, having never been, decided that New York was where I needed to go. While researching various vocations, an article in the New York Times; *The Golden Eye: Five Dealers Whose Taste is Trusted*, caught my eye. Joseph Rondina was one of the dealers featured. I sent a resume and covering letter, and to my surprise, he responded, beginning a close friendship which would span almost three decades. I had in the interim been offered a position at Christies, but I was invited to visit him at his apartment once I arrived in New York. This initial meeting turned into weekly dinner and trips to museums and exhibitions, building on our mutual love of furniture and social history and leaving behind an indelible impression on my soul. He found in me a willing and eager student grateful for the overwhelming kindness shown to me under his protective wing, whereas in him I found a kindred spirit, a man generous with both his time and his vast scope of knowledge and experience, and more than willing to share this with anyone expressing an interest. When I relocated to London a few years later to do a master's degree, the visits became less frequent but we remained in daily contact.

What is wonderful about the selection here is not only the personal glimpse through the keyhole into a life of gracious living, but the beauty of the objects in their own right, and the value placed on them and their story. These were not appurtenances put together as part of a decorative scheme, but because each item was esteemed for its intrinsic beauty as well as for the role it played as part of the whole.

His apartment was a veritable Aladdin's cave which enchanted the senses. Filled with an abundance of Khmer tomb furnishings, Greek and Roman antiquities, Tang horses and attendants, Neolithic pottery and Renaissance bronzes, all vying for attention yet juxtaposing seamlessly with the warm patina of Régence commodes, Japanese lacquer tables and Louis XV beech fauteuils. A twelve panel coromandel screen divided the room and provided a visual pause before one's eye continued again on the opposite side. Stacks of well-thumbed books near every seat paid testament to an unquenchable thirst for knowledge and keeping abreast of current trends. Scores of deities and guardians from many centuries and cultures stood watch and added an air of serenity and peace to the apartment.

The results were magical. Spaces and interiors which were chic and sophisticated with every detail carefully curated, yet effortlessly comfortable and welcoming with the impression of having been put together through generations. These rooms featured in three issues of *Architectural Digest*.

Joseph Rondina was born into a first-generation Florentine American family in Auburn, upstate New York. He attended Auburn schools, graduated from Manlius Military Academy, and served in World War II with the U.S. Army Occupation Forces stationed in Berlin. Returning to the U.S. at the end of the war with a renewed appreciation of art and history, as well as a continental approach to decorating, he graduated from the Whitman School of Design in New York City. He opened Joseph Rondina Antiques in 1957 on East 62 Street at Madison Avenue, taking over the existing premises of Williams-Michelsen. With his instinctive eye for elegance and refinement, it was not long before his establishment was the go-to destination for European aristocracy, scions of industry, notables of the social register and café society from the U.S. and abroad.

His interests focused primarily on European 18th century decorative arts and furniture, over time developing to include Chinese, Korean, Indian, Siamese, Cambodian, Persian and Japanese, bringing a more esoteric and exotic style to the market. With his sensitivity to changes in taste, he captured the mood of the period and knew exactly what was appropriate for the time. It would bring him enormous pleasure to see his collection enjoyed by the next set of owners.

The selection of furniture and objects in this catalogue tell a story of an intensely private individual and give an insight into an extraordinary life well-lived.

Don McNair
May 2022



Session I

Asian Art



101

Chinese Celadon Glazed Ceramic Jar and Cover

Chinese Celadon Glazed Ceramic Jar and Cover of compressed baluster form, the 'hundred rib' jar with domed lotus form cover and stem form finial

height: 11 ¼ inches, diameter: 12 ½ inches

\$500-300



102

Two Similar Chinese Green Glazed Lidded Ceramic Vessels

Two Similar Chinese Green Glazed Lidded Ceramic Vessels (Liao Dynasty) each of globular form with domed lid, evenly applied glaze and molded relief decoration

height (larger): 14 ¼ inches, diameter (larger): 9 ¾ inches

the smaller one is thermoluminescence dated, the result of Daybreak thermoluminescence test no. 363A666 is consistent with the dating of this lot

\$700-1,000



103

Pair of Chinese Celadon Glazed Ceramic Vases

Pair of Chinese Celadon Glazed Ceramic Vases with a Longquan style glaze

height: 19 ½ inches, diameter: 8 ½ inches

\$700-1,000



104

Two Chinese Celadon Glazed Ceramic Pagoda Form Vessels and Covers

Two Chinese Celadon Glazed Ceramic Pagoda Form Vessels, and Covers the ovoid body with carved floral decoration and surmounted with architectural neck and roof form cover

height (larger): 18 inches, diameter (larger): 9 inches

\$400-600

105

Large Chinese Celadon Glazed Charger

Large Chinese Celadon Glazed Charger with carved scrolling foliate decoration

diameter: 26 ½ inches

\$300-500



106

Chinese Amber Glazed Ceramic Flask

Chinese Amber Glazed Ceramic Flask (Liao Dynasty) the elongated ovoid body topped with a pinched handle and cylindrical spout, the mouth, handle and half of the body covered in an even amber glaze over white stoneware body

height: 12 ¼ inches, diameter: 4 ¼ inches

\$800-1,200



107

Chinese Amber Glazed Pottery Flask

Chinese Amber Glazed Pottery Flask (Liao Dynasty) the ovoid body topped with a ruffled handle and cylindrical spout, the stoneware body covered in an amber glaze that ends just above the base of the vessel

height: 11 ½ inches, diameter: 5 ½ inches

\$1,000-1,500



108

Three Chinese Amber Glazed Ceramic Vessels

Three Chinese Amber Glazed Ceramic Vessels (Tang Dynasty) including one lidded urn and two bowls height (tallest): 7 inches, diameter (tallest): 5 inches

\$400-600



Courtesy of Andrew Federico

109

Chinese Amber Glazed Ceramic Jar and Cover

Chinese Amber Glazed Ceramic Jar and Cover (Tang Dynasty) the ovoid body with short neck, rolled mouth and tapers to a narrow foot

height: 10 ½ inches, diameter: 8 ½ inches

the result of Daybreak thermoluminescence test no. 363A678 is consistent with the dating of this lot

\$400-600



110

Near Pair of Chinese Amber Glazed Stoneware Vases

Near Pair of Chinese Amber Glazed Stoneware Vases (Liao Dynasty) of elongated baluster form, each covered with an even amber glaze that ends just above the base

height (larger): 14 ½ inches, diameter (larger): 5 inches

the taller one is thermoluminescence dated, the result of Daybreak thermoluminescence test no. 363A227 is consistent with the dating of this lot

\$800-1,200



111

Chinese Amber Glazed Amphora with Dragon Form Handles

Chinese Amber Glazed Amphora with Dragon Form Handles (Tang Dynasty) the neck and shoulders covered in amber glaze

height: 14 inches, diameter: 7 inches

\$800-1,200



112

Chinese Sancai Glazed Stoneware Bowl

Chinese Sancai Glazed Stoneware Bowl (Tang Dynasty) of globular form, the shoulder glazed with splashed green, amber and straw glaze

height: 4 inches, diameter: 7 inches

\$400-600



113

Two Chinese Brown Glazed Hu Form Vessels and Covers

Two Chinese Brown Glazed Hu Form Vessels and Covers (Han Dynasty) each with brown glaze over a red ceramic body

height (each): 10 inches, diameter (each): 7 inches

\$600-800





114
Chinese Sancai Glazed Pottery Jar and Cover

Chinese Sancai Glazed Pottery Jar and Cover (Tang Dynasty) of baluster form with tapered body, short neck and everted rim, the cover and body with green glaze and wax resist florets in cream and amber
height: 7 ½ inches, diameter: 7 ½ inches
\$800-1,200



115
Chinese Sancai and Blue Glazed Vessel and Cover

Chinese Sancai and Blue Glazed Vessel and Cover (Tang Dynasty) decorated with stripes running vertically down the shoulder of the vessel and with resist wax circular patterns
height: 9 inches, diameter: 8 ½ inches
\$1,000-1,500



116
Two Chinese Glazed Stoneware Ewers

Two Chinese Glazed Stoneware Ewers each glazed with curving green lines on white ground
height: 9 inches, width: 5 ¾ inches
\$100-200

117
Pair of Chinese Bronze Archaic Style Hu Form Vessels

Pair of Chinese Bronze Archaic Style Hu Form Vessels, each with dragon form handles flanking the neck and with dragon form feet at the base
height (each): 29 ⅝ inches, width (each): 14 ¾ inches
\$600-800



118
Chinese Archaic Style Bronze You Form Vessel and Cover

Chinese Archaic Style Bronze You Form Vessel and Cover (Western Zhou Style), the surface with taotie mask decoration defined with some elements in relief and on fine leiwen ground
height: 12 inches, width: 6 ½ inches
\$700-1,000



119
Pair of Chinese Metal Vessels and Covers
height (each): 8 inches, width (each): 9 ½ inches
\$200-400



120
Pair of Chinese Bronze Mountain Form Censers and Covers, Boshanlu

Pair of Chinese Bronze Mountain Form Censers and Covers, Boshanlu (Han Dynasty Style) parcel gilt and with engraved designs
height (each): 11 inches, diameter (each): 6 inches
\$400-600



121
Chinese Bronze Figure of a Horse
height: 23 ½ inches, width: 21 inches
\$300-500



122

Chinese Painted Pottery Figure of a Dancer (Han Dynasty)

height (figure): 7 ¾ inches, width (figure): 6 inches
the result of Oxford Authentication thermoluminescence test no. C198y34
is consistent with the dating of this lot

\$200-400



123

Chinese Painted Pottery Figure of a Dancer (Han Dynasty)

height (figure): 8 inches, width (figure): 6 inches

\$200-400



124

Chinese Painted Pottery Figure of a Dancer (Han Dynasty)

height (figure): 8 inches, width (figure): 7 inches
the result of Oxford Authentication thermoluminescence test no. C198y34
is consistent with the dating of this lot

\$200-400

125

Chinese Painted Pottery Figure of a Dancer

Chinese Painted Pottery Figure of a Dancer (Han Dynasty) the standing figure modeled as if performing with one arm raised with sleeve slung over the shoulder, the other dropped back, the long robe flaring outward at the base

height: 18 inches, width: 6 inches

\$400-600



126

Chinese Painted Pottery Figure of a Court Lady

Chinese Painted Pottery Figure of a Court Lady (Han Dynasty) the slender figure wearing long winter robes flaring to a wide train in the back, her head protected by a cowl and her hands concealed within the muff held at her waist

height: 12 ½ inches, width: 7 ½ inches

the result of Oxford Authentication thermoluminescence test no. C198z45
is consistent with the dating of this lot

\$800-1,200



127

Chinese Painted Pottery Figure

Chinese Painted Pottery Figure (Han Dynasty) the slender figure wearing long winter robes flaring to a wide train in the back, her head protected by a cowl and her hands concealed within the muff held at her waist

height: 12 ½ inches, width: 8 ¼ inches

\$800-1,200





128
Pair of Chinese Painted Pottery Figures of Court Ladies
Pair of Chinese Painted Pottery Figures of Court Ladies (Tang Dynasty) having red-orange tops and ties around skirts
height (larger): 12 inches, width (larger): 3 ¼ inches
one is thermoluminescence dated, the result of Daybreak thermoluminescence test no. 373A23 is consistent with the dating of this lot
\$800-1,200



129
Pair of Large Chinese Painted Pottery Figures of Court Officials (Tang Dynasty)
height (larger): 30 inches, width (larger): 8 inches
the taller one is thermoluminescence dated, the result of Oxford Authentication thermoluminescence test no. C198b38 is consistent with the dating of this lot
\$800-1,200



130
Chinese Yue Glazed Ceramic Owl Form Vessel
Chinese Yue Glazed Ceramic Owl Form Vessel (Han Dynasty) lidded jar in the shape of an owl, the red stoneware body partially covered in olive green glaze, and with incised feathers and other details
height: 18 inches, width: 8 inches
the result of Oxford Authentication thermoluminescence test no. P199e16 is consistent with the dating of this lot
\$5,000-8000



131
Chinese Yue Glazed Pottery Owl Form Vessel
Chinese Yue Glazed Pottery Owl Form Vessel (Han Dynasty) the stoneware vessel and cover partially covered in the olive color glaze, the head and body with incised feathers and other details
height: 17 ½ inches, width: 7 ½ inches
the result of Oxford Authentication thermoluminescence test no. C199e15 is consistent with the dating of this lot
\$5,000-8,000



132
Chinese Painted Pottery Figure of a Court Lady (Tang Dynasty)
 height (figure): 12 ¼ inches, width (base): 8 inches
 \$400-600



133
Chinese Painted Pottery Figure of a Court Lady (Tang Dynasty)
 height (figure): 12 ¾ inches, width (base): 7 inches
 the result of Daybreak thermoluminescence test no. 363A159 is consistent with the dating of this lot
 \$400-600



134
Chinese Painted Pottery Figure of a Court Lady (Tang Dynasty)
 height (figure): 14 ¾ inches, width (base): 7 inches
 the result of Daybreak thermoluminescence test no. 363A160 is consistent with the dating of this lot
 \$400-600



135
Pair of Chinese Amber and Straw Glazed Bactrian Camels (Tang Dynasty)
 height: 20 ½ inches, length: 12 ½ inches
 \$800-1,200



137
Chinese Painted Pottery Figure of a Camel
 Chinese Painted Pottery Figure of a Camel (Eastern Wei Dynasty), a Bactrian camel with saddle
 height: 15 ½ inches, width: 10 ¾ inches
 the result of Oxford Authentication thermoluminescence test no. C299k7 is consistent with the dating of this lot
 \$500-800



136
Two Chinese Sancai Glazed Caparisoned Horses
 Two Chinese Sancai Glazed Caparisoned Horses (Tang Dynasty) each standing four square, with well defined musculature and glazed all over with brown, cream and green glaze
 height: 19 ½ inches, width: 22 inches
 the results of Oxford Authentication thermoluminescence test no.C198j2 and no.C198g53 are consistent with the dating of this lot
 \$1,500-2,500



138
Two Chinese Sancai Glazed Figures of Camels (Tang Dynasty)
 height: 23 ½ inches, width: 16 inches
 \$800-1,200



139
Pair of Chinese Painted Pottery Horses and Riders
(Han Dynasty)

height: 22 inches, width: 21 ½ inches

\$600-800



140
Pair of Chinese Painted Pottery Duck Form Pouring Vessels

Pair of Chinese Painted Pottery Duck Form Pouring Vessels (Han Dynasty), the vessels with a globular body and tapered neck ending with a duck form head, the neck painted with a feather pattern and the body decorated with banded design

height (each): 14 inches, diameter (each): 7 ½ inches

\$400-600



141
Pair of Chinese Painted Pottery Figures of Horses
(Han Dynasty)

height: 14 inches, width: 18 ½ inches

\$300-500



142
Chinese Painted Pottery Prancing Horse

Chinese Painted Pottery Prancing Horse (Tang Dynasty) with contemporary base

height: 23 ½ inches, width: 19 ½ inches

\$600-800



143
Pair of Chinese Painted Pottery Figures of Ducks

Pair of Chinese Painted Pottery Figures of Ducks (Han Dynasty), each painted with stylized feather patterns

height (larger): 14 inches, width (larger): 17 inches

the larger one is thermoluminescence dated, the result of Oxford Authentication thermoluminescence test no. C199d25 is consistent with the dating of this lot

\$400-600

144
Pair of Chinese Painted Pottery Figures of Lions

Pair of Chinese Painted Pottery Figures of Lions (Han Dynasty), the crouching figures depicted roaring with an open mouth and bared teeth

height (larger): 9 ¼ inches, width (larger): 13 ¾ inches

the result of Daybreak thermoluminescence test no. 373A20 is consistent with the dating of this lot

\$1,000-1,500



145
Pair of Chinese Porcelain Famille Verte Buddhist Lions
(Qing Dynasty)

height (each): 17 inches, width (each): 7 ½ inches
each stamped to base

\$700-1,000



146
Pair of Chinese Carved and Painted Stone Figures of Lions

Pair of Chinese Carved and Painted Stone Figures of Lions with painted details

height (each): 16 ½ inches, width (each): 6 ½ inches

\$200-400





147
Chinese Sancai Glazed Pottery Tripod Vessel
Chinese Sancai Glazed Pottery Tripod Vessel (Tang Dynasty) the globular body with everted rim and three lion paw form feet, and decorated with wax resist roundels on the shoulder and bands of amber, green and cream glaze across the body
height: 6 ¼ inches, diameter: 7 ½ inches
\$1,000-2,000

148
Chinese Sancai with Blue Glazed Ceramic Tripod Vessel
Chinese Sancai with Blue Glazed Ceramic Tripod Vessel (Tang Dynasty) of globular form with three lion paw form feet, the body decorated with patterns in cream, amber and blue formed with wax resist technique
height: 5 ¾ inches, diameter: 8 ¼ inches
\$1,000-1,500



149
Four Chinese Sancai Glazed Ceramic Table Objects
Four Chinese Sancai Glazed Ceramic Table Objects (Tang and Liao Dynasty) comprising a near pair of ovoid ewers (Tang Dynasty) and a pair of shallow bowls with molded foliate decoration (Liao Dynasty)
height (teapot): 4 ½ inches, diameter (teapot): 3 ¼ inches
\$400-600



150
Large Chinese Carved Stone Figure of Buddha
Large Chinese Carved Stone Figure of Buddha seated on a lotus form base
height: 35 ½ inches, width: 16 ¼ inches
\$400-700



152
Chinese Stone Buddha Head (Sui Dynasty Style)
height (overall): 26 inches
height (head): 17 ¾ inches
\$400-600



151
Chinese Stone Figure of a Bodhisattva (Sui Dynasty Style)
height (overall): 44 inches, width (base): 10 inches
\$800-1,200



153
Chinese Stone Figure of Standing Buddha (Sui Dynasty Style)
height: 51 ¼ inches, width: 13 inches
\$600-800



154
Asian Large Parcel Gilt Lacquered Wood Figure of an Arhat

Asian Large Parcel Gilt Lacquered Wood Figure of an Arhat (18th/19th Century) realistically depicted, seated wearing a Buddhist monk's robe, holding a walking stick, with painted crystal inset eyes, and in contemplation; the gilt skin, the elongated earlobes and the cranial bump that is reminiscent of the Buddha's ushnisha, are all visual indicators that this is a being with a higher level of consciousness
height: 26 ½ inches, width: 37 inches
purchased from Gump's
\$4,000-6,000



155
Large Chinese Parcel Gilt and Painted Stone Buddha
Large Chinese Parcel Gilt and Painted Stone Buddha, the figure with hands in varada mudra, the skin gilt and the draped robe painted in red, blue and green pigments
height: 31 inches, width: 21 inches
\$800-1,200

156
Chinese Gilt and Painted Stone Figure of Buddha
height: 46 ½ inches, width: 12 inches
\$800-1,200



157
Chinese Carved and Painted Stone Buddha
Chinese Carved and Painted Stone Buddha seated on a lotus base
height: 36 ½ inches, width: 13 ¼ inches
\$800-1,200



158
Two Large Chinese Stone Standing Figures
height (larger): 38 ½ inches, width (larger): 11 ¼ inches
\$200-400





159

Chinese Sancai Glazed Figure of a Lokapala

Chinese Sancai Glazed Figure of a Lokapala (Tang Dynasty), the armor is patterned with green and cream glaze that is framed by brown trim, sleeves and lining

height: 33 ½ inches, width: 14 ½ inches

the result of Oxford Authentication thermoluminescence test no. C198f41 is consistent with the dating of this lot

\$1,500-2,500



160

Chinese Sancai Glazed Pottery Earth Spirit

Chinese Sancai Glazed Pottery Earth Spirit (Tang Dynasty) the head and body covered in green, amber and straw patterned glaze

height: 24 ¾ inches, width: 7 ½ inches

the result of Daybreak thermoluminescence test no. 363A428 is consistent with the dating of this lot

\$1,000-1,500



161

Chinese Sancai and Painted Pottery Earth Spirit

Chinese Sancai and Painted Pottery Earth Spirit (Tang Dynasty) the face with painted details and the body with amber, green and straw glazed sancai palette

height: 27 inches, width: 8 inches

the result of Daybreak thermoluminescence test no. 363A429 is consistent with the dating of this lot

\$1,500-2,500



162

Two Chinese Sancai Glazed Figures of Foreign Grooms

Two Chinese Sancai Glazed Figures of Foreign Grooms (Tang Dynasty) one with painted details and with amber and cream glazed garments; the other with a molded beard and with amber and green glazed garments

height (taller): 23 ½ inches, width (taller): 8 inches

\$400-600



163

Pair of Chinese Large Sancai Glazed and Painted Pottery Lokapala

Pair of Chinese Large Sancai Glazed and Painted Pottery Lokapala (Tang Dynasty) each figure in a strong stance with arm outstretched and hand clasped, originally grasping a spear or weapon, with one raised leg resting on a recumbent bull, each face finely detailed with black and red pigments, and the armor colored with patterned sancai green, cream and amber glaze

height (larger): 30 ½ inches, width (larger): 12 inches

the smaller one is thermoluminescence dated, the result of Research Laboratory for Archaeology and the History of Art, Oxford University thermoluminescence test no. 866g30 is consistent with the dating of this lot

\$6,000-8,000



164

Pair of Chinese Amphoras with Dragon Form Handles

Pair of Chinese Amphoras with Dragon Form Handles (Tang Dynasty) ovoid form with a slender banded neck, flanked by two double stranded handles, each ending with a dragon form head biting the rim, the mouth, neck and shoulders with a pale green glaze over a white stoneware body
height (larger): 14 ½ inches, diameter (larger): 8 ½ inches

\$1,000-1,500



165

Chinese Porcelain Lobed Ewer and Cover
(Song Dynasty)

height: 8 inches, width: 5 ¾ inches

\$400-600



166

Four Chinese Glazed Stoneware Vessels

Four Chinese Glazed Stoneware Vessels (Qing Dynasty, 17th/18th Century and later) including pair of lidded ceramic jars, and a pair of press molded hexagonal tea caddies each with mark in relief
height (largest): 7 ½ inches, diameter (largest): 7 ½ inches

\$200-400



167

Chinese White Glazed Ceramic Vessel and Cover
(Tang Dynasty)

height: 6 ½ inches, diameter: 6 inches

\$400-600

168

Chinese Near Pair of Porcelain Covered Jars

Chinese Near Pair of Porcelain Covered Jars with a pale blueish green Qingbai style glaze
height: 7 inches, diameter: 6 inches

\$200-400



169

Pair of Chinese White Glazed Ceramic Flasks

Pair of Chinese White Glazed Ceramic Flasks (Liao Dynasty) each with ovoid body tapering up to the shoulder and topped with pinched handle and spherical spout
height (larger): 10 inches, diameter (larger): 4 ½ inches

\$400-600



170

Two Chinese Cizhou Pillows

Two Chinese Cizhou Pillows, each with cream glaze and carved foliate decoration
height (larger): 4 ¾ inches, width (larger): 8 ¼ inches

\$300-500



171

Pair of Chinese White Glazed Ceramic Vases

Pair of Chinese White Glazed Ceramic Vases (possibly Song Dynasty) the stoneware body covered in a clear or white glaze, each of globular form with flared mouth and with applied dragon around the neck
height (larger): 8 ½ inches, diameter (larger): 5 inches

\$300-500



172

Group of Three Chinese Ceramic Bowls

Group of Three Chinese Ceramic Bowls comprising two Qinghai glazed bowls and one white glazed bowl
height (tallest): 3 ⅞ inches, diameter (tallest): 4 ¾ inches

\$300-500





173

Pair of Chinese Painted Pottery Fanghu Form Vessels and Covers

Pair of Chinese Painted Pottery Fanghu Form Vessels and Covers (Han Dynasty), each vessel with handles in relief on each side

height (larger): 16 inches, width (larger): 8 ¼ inches

\$600-800



174

Pair of Chinese Painted Pottery Fanghu Form Vessels and Covers

Pair of Chinese Painted Pottery Fanghu Form Vessels and Covers (Han Dynasty), the earthenware body painted with red, white black, lavender and green pigments, each vessel with two applied taotie mask and loose ring handles

height (larger): 19 ¾ inches, width (larger): 9 inches

\$600-800



175

Pair of Chinese Painted Pottery Fanghu Form Vessels and Covers

Pair of Chinese Painted Pottery Fanghu Form Vessels and Covers (Han Dynasty), each with two handles in relief

height (each): 21 inches, width (each): 9 ½ inches

\$600-800



176

Chinese Painted Pottery Hu Form Vessel and Cover (Han Dynasty)

height: 17 ¾ inches, diameter: 13 ¼ inches

\$400-600



177

Chinese Painted Pottery Hu Form Vessel

Chinese Painted Pottery Hu Form Vessel (Han Dynasty), the earthenware body painted in black, white and red pigments

height: 18 ¼ inches, diameter: 13 ¼ inches

\$400-600

178

Chinese Painted Pottery Hu Form Vessel (Han Dynasty)

height: 13 ¾ inches, diameter: 9 ½ inches

\$400-600



179

Two Chinese Painted Pottery Stem Cups (Han Dynasty)

height (larger): 8 ¼ inches, diameter (larger): 6 ¼ inches

\$200-400



180

Chinese Green Glazed Pottery Model of a Granary (Han Dynasty)

height: 15 ¾ inches, width: 10 inches

the result of Daybreak thermoluminescence test no. 363A10 is consistent with the dating of this lot

\$400-600



181

Two Chinese Grey Pottery Granaries

Two Chinese Grey Pottery Granaries (Han Dynasty) each with impressed geometric decoration and a cover

height (larger): 14 ¼ inches, diameter (larger): 9 ¼ inches

\$400-600



182

Two Neolithic Chinese Pottery Tripod Vessels, Li

Neolithic Chinese Pottery Tripod Vessels (Li), each earthenware body covered in black slip

height (each): 11 ½ inches, diameter (each): 7 inches

\$400-600





183
Chinese Neolithic Painted Pottery Vessel

Chinese Neolithic Painted Pottery Vessel of tapered ovoid form with two lug handles just below the shoulder
height: 11 inches, width: 11 ½ inches

\$400-600



184
Chinese Neolithic Painted Pottery Vessel

Chinese Neolithic Painted Pottery Vessel of tapered ovoid form with two lug handles on the sides
height: 15 ¾ inches, diameter: 16 ½ inches

\$400-600



185
Chinese Neolithic Painted Pottery Vessel

Chinese Neolithic Painted Pottery Vessel, the top half decorated with black slip
height: 17 inches, diameter: 16 inches

\$400-600



186
Chinese Neolithic Painted Pottery Vessel

Chinese Neolithic Painted Pottery Vessel with tapered earthenware body
height: 11 ¼ inches, width: 12 inches

\$400-600



187
Chinese Neolithic Painted Pottery Vessel

Chinese Neolithic Painted Pottery Vessel decorated with black slip from the mouth through the shoulder of the vessel
height: 16 inches, diameter: 16 inches
the result of Daybreak thermoluminescence test no. 363A465 is consistent with the dating of this lot

\$400-600

188
Large Chinese Sancai Glazed and Painted Pottery Figure of a Lokapala

Large Chinese Sancai Glazed and Painted Pottery Figure of a Lokapala (Tang Dynasty) realistically detailed, in dynamic pose with both arms outstretched in an archer's posture, the face in a concentrated expression, the body defined by detailed and ornate armor, including shoulder pads in the form of dragons, the face and helmet painted with red and black pigments and the remainder covered in wax resist created patterns from green, amber and cream glaze
height: 37 ½ inches, width: 22 inches

\$1,500-2,500



189
Chinese Large Sancai Glazed Figure of a Lokapala

Chinese Large Sancai Glazed Figure of a Lokapala (Tang Dynasty) the figure with fierce expression, the helmet detailed with a phoenix face extended forward by a thin neck and flanked by two outstretched wings, the armor with extensive molded detail, and colored with splashed sancai green, amber and cream color glaze

height: 41 inches, width: 9 inches

the result of Oxford Authentication thermoluminescence test no. C198h34 is consistent with the dating of this lot

\$1,500-2,500

190
Chinese Sancai Glazed Pottery Figure of a Court Official

Chinese Sancai Glazed Pottery Figure of a Court Official (Tang Dynasty) the figure shown in a formal aspect, standing upright and grasping a document in the form of a vertical plaque, his robe is defined by the glaze on the collar and cuffs that are nicely patterned with wax resist technique

height: 34 inches, width: 8 ½ inches

the result of Oxford Authentication thermoluminescence test no. C198h33 is consistent with the dating of this lot

\$1,200-1,800





191
Two Chinese Sancai and Green Glazed Figures of Grooms
(Tang Dynasty)

height (largest): 18 inches, width (largest): 6 ½ inches
the taller one is thermoluminescence dated, the result of Daybreak thermoluminescence test no. 363A672 is consistent with the dating of this lot

\$1,000-2,000



192
Three Chinese Painted Pottery Figures of Soldiers

Three Chinese Painted Pottery Figures of Soldiers (Han Dynasty) each with painted armor
height (largest): 18 ½ inches, width (largest): 7 ¼ inches
one is thermoluminescence dated, the result of Oxford Authentication thermoluminescence test no. C198b42 is consistent with the dating of this lot

\$1,500-2,500



193
Pair of Large Chinese Painted Pottery Lokapala

Pair of Large Chinese Painted Pottery Lokapala (Tang Dynasty) each figure finely modeled, wearing belted and strapped armor, molded with ruyi form breastplates over a tuni with flared sleeves, the red pottery with traces of the original pigments
height: 34 ½ inches, width: 13 ½ inches
the results of Daybreak thermoluminescence test no. 373A26 and no. 373A27 are consistent with the dating of this lot

\$1,000-2,000



194
Three Chinese Green Glazed Figures of Grooms

Three Chinese Green Glazed Figures of Grooms (Tang Dynasty) including foreign grooms
height (largest): 18 inches, width (largest): 6 ½ inches

\$400-600



195
Four Chinese Jianyao Tea Bowls

height (largest): 2 ¾ inches, diameter (largest): 4 ¾ inches

\$2,500-3,500



196
Two Chinese Black Glazed Tea Bowls

height (larger): 1 ¾ inches, width (larger): 3 ⅝ inches

\$1,000-1,500

197
Chinese Celadon Glazed Tripod Censor

Chinese Celadon Glazed Tripod Censor (Song Dynasty) with handles and carved floral motifs
height: 5 ½ inches, diameter: 6 ¼ inches

\$2,000-3,000





198

Chinese Celadon Glazed Vessel and Cover

Chinese Celadon Glazed Vessel and Cover the body decorated with carved foliate design and with applied animals along the shoulder

height: 14 ¾ inches, diameter: 9 inches

\$200-400



199

Pair of Chinese White Glazed Ceramic Ewers

Pair of Chinese White Glazed Ceramic Ewers (Tang Dynasty) each with a double strap handle ending in the form of a dragon head biting the rim of the vessel

height (larger): 16 ½ inches, diameter (larger): 7 ½ inches

\$400-600



200

Pair of Chinese White Glazed Ovoid Jars and Covers

Pair of Chinese White Glazed Ovoid Jars and Covers (Tang Dynasty) each stoneware body covered with a clear olive green tinted glaze to just above the base, and with flared foot

height (larger): 8 ¾ inches, diameter (larger): 7 ½ inches

\$300-500



201

Two Chinese Ceramic White Glazed Vessels

Two Chinese Ceramic White Glazed Vessels (Tang Dynasty) each of baluster form with short neck and everted rim

height (larger): 5 ¾ inches, diameter (larger): 5 ½ inches

\$300-500



202

Three Chinese Sichuan Black Pottery Amphora Vases (Han Dynasty)

height (largest): 13 ½ inches, diameter (largest): 13 inches

\$300-500



203

Pair of Chinese Sichuan Black Pottery Amphora Vases (Han Dynasty)

height (each): 12 ½ inches, diameter (each): 13 inches

\$300-500

204

Pair of Chinese Porcelain Famille Noire Vases

Pair of Chinese Porcelain Famille Noire Vases, the gu-form vases decorated with birds and insects among fruiting and flowering branches growing from rocky outcrops, the central frieze with six panels enclosing various motifs of flowers and foliage in vases and raised on stands, all on a black ground and embellished with borders of flowerheads and ruyi

height (each): 28 ¼ inches, width (each): 9 inches

\$1,000-2,000



205

Pair of Chinese Porcelain Famille Verte Baluster Jars and Covers

Pair of Chinese Porcelain Famille Verte Baluster Jars and Covers (late Qing Dynasty) each with mythical beasts and prunus blossoms on a green ground

height (each): 18 inches, diameter (each): 13 inches

\$800-1,200





206
Pair of Chinese White Glazed Amphoras with Dragon Form Handles (Tang Dynasty)

height (larger): 15 ½ inches, diameter (larger): 8 ¼ inches

\$700-1,000

207
Pair of Chinese Green Glazed Pottery Ovoid Jars (Tang Dynasty)

height (each): 9 ¼ inches, width (each): 6 ½ inches

\$300-500



208
Pair of Chinese Green Glazed Ceramic Hu Form Vessels

Pair of Chinese Green Glazed Ceramic Hu Form Vessels (Han Dynasty) each with a band of relief molded decoration on the shoulder

height (larger): 14 inches, diameter (larger): 11 inches

\$400-600



209
Pair of Chinese Gilt Lacquered Wood Buddhist Lions

Pair of Chinese Gilt Lacquered Wood Buddhist Lions (Qing Dynasty) one with its paw on a ball, the other figure with its paw on a cub, each raised on carved wood plinths

height (lion): 15 inches, height (overall): 22 ½ inches

\$1,500-2,500



210
Chinese Carved and Painted Wood Figure of Guanyin

Chinese Carved and Painted Wood Figure of Guanyin, the bodhisattva of compassion shown seated and in contemplation
height: 34 inches, width: 20 inches

\$800-1,200

211
Indian Bronze Seated Figure of a Hindu Deity

height: 15 inches, width: 7 inches

\$400-700



212
Folk Art Carved Wood Weeping Buddha

Folk Art Carved Wood Weeping Buddha, similar to work by Ida Bagus Tilem (Indonesian, 1936-1993)

height: 4 inches, width: 4 inches

\$100-200



213
Two Khmer Bronze Palanquin Pole Ends and Bronze Temple Bell

Two Khmer Bronze Palanquin Pole Ends and Bronze Temple Bell (Angkor Vat Period, 12th century)
raised on stands
height (largest): 7 ¾ inches, width (largest): 11 ¼ inches
purchased in 1996 from Stephen Gano Collection, Far Eastern Antiques & Arts, Inc, New York, NY

\$1,500-2,500



214
Pair of Chinese Bronze Fanghu Form Vessels and Covers

Pair of Chinese Bronze Fanghu Form Vessels and Covers (Han Dynasty) each flanked with two taotie mask and loose ring handles
height (each): 15 ¾ inches, width (each): 8 inches

\$800-1,200



215
Four Chinese Bronze Fanghu Form Vessels and Covers

Four Chinese Bronze Fanghu Form Vessels and Covers (Han Dynasty), comprising a small pair and two larger examples
height (largest): 17 inches, width (largest): 7 inches

\$600-800

216
Chinese Archaic Style Bronze Vessel, Gui

Chinese Archaic Style Bronze Vessel (Gui), the body cast with taotie mask on leiwen ground, each ‘c’ form handle is topped with an animal head and end with a flange
height: 11 ½ inches, width: 14 ½ inches

\$400-600



217
Chinese Bronze Duck Form Lamp

Chinese Bronze Duck Form Lamp, the duck cast with details of feathers on the neck and wings
height: 22 inches, width: 15 inches

\$300-500



218
Chinese Bronze Duck Form Censer

Chinese Bronze Duck Form Censer, the duck cast with details of feathers on the neck and wings and a fish in its mouth
height: 32 inches, width: 21 inches

\$400-600



219
Chinese Bronze Duck Form Lamp

Chinese Bronze Duck Form Lamp cast with details of feathers on the neck and wings and a fish in its mouth
height: 19 inches, width: 12 ½ inches

\$300-500



220
Pair of Chinese Inlaid Bronze Figures of Dragons

Pair of Chinese Inlaid Bronze Figures of Dragons each decorated with patterned stone inlay, mounted on Lucite stands
height (each): 15 ½ inches, width (each): 20 inches

\$200-400





221
Chinese Gilt Splashed Bronze Tripod Censer
height: 3 ½ inches, diameter: 8 inches
\$600-800



222
Chinese Gilt Splashed Bronze Bombe Form Censer
Chinese Gilt Splashed Bronze Bombe Form Censer with a Xuande mark on the underside and with a lion face form handle in relief on each side
height: 3 inches, diameter: 7 ½ inches
\$600-800



223
Pair of Chinese Gilt Bronze Mask Form Handles
Pair of Chinese Gilt Bronze Mask Form Handles (Han Dynasty) cast as a taotie mask surmounted by a bird
height (each): 9 ¾ inches, width (each): 7 ½ inches
\$400-600



224
Two Burmese Patinated Bronze Rain Drums, Karen People
Two Burmese Patinated Bronze Rain Drums, Karen People, the body with banded geometric decoration; these were used as ritual objects by the Karen people to attract rain
height (larger): 10 ¾ inches, diameter (larger): 18 ½ inches
\$200-400

225
Three Chinese Parcel Gilt Bronze Figures of Lions
Three Chinese Parcel Gilt Bronze Figures of Lions (Han Dynasty Style) including one pair of lion form mat weights and single figure of a lion
height (largest): 5 inches, width (largest): 9 inches
\$400-600



226
Three Chinese Parcel Gilt Bronze Figures of Lions (Han Dynasty Style)
height (largest): 3 1/2 inches, width (largest): 6 1/2 inches
\$300-500
Chinese Art Gallery Ltd., NY



227
Chinese Gilt Group of Two Lions
height: 4 ½ inches, width: 6 ½ inches
\$200-400



228
Chinese Gilt and Stone Inlaid Bronze Bird Form Mat Weight
Chinese Gilt and Stone Inlaid Bronze Bird Form Mat Weight (Han Dynasty Style), parcel gilt with turquoise and red stone, possibly carnelian
height: 3 ½ inches, diameter: 4 inches
\$200-400





230

Two Chinese Bronze Tripod Ding Form Vessels and Covers

Two Chinese Bronze Tripod Ding Form Vessels and Covers (possibly Han Dynasty), each vessel of globular form, the mouth flanked by two upright handles, and supported with three legs, the covers each topped with three small round loop form handles

height (larger): 6 ¾ inches, diameter (larger): 9 inches

\$400-600



229

Chinese Bronze Tripod Ding Form Vessel and Cover

Chinese Bronze Tripod Ding Form Vessel and Cover (Han Dynasty), the body cast with a fine and tight leiwen pattern

height: 17 inches, width: 16 ¼ inches

\$500-800



231

Chinese Parcel Gilt Metal Box and a Pair of Metal Urns (Liao Dynasty Style)

height (box): 9 ⅝ inches, width (box): 8 inches

\$300-500

232

Pair of Chinese Gilt Metal Models of Pagodas

Pair of Chinese Gilt Metal Models of Pagodas, each with eight tiers
height (each): 33 inches, width (each): 11 inches

\$600-800



233

Chinese Hardstone Inlaid and Gilt Metal Model of a Pagoda

Chinese Hardstone Inlaid and Gilt Metal Model of a Pagoda with eight tiers, each decorated with inlaid stones

height: 31 inches, width: 14 ½ inches

inscribed to base

\$600-800



234

Pair of Chinese Bronze Vessels with Duck Form Covers

Pair of Chinese Bronze Vessels with Duck Form Covers cast with details of feathers on the neck and wings

height (each): 14 ¼ inches, diameter (each): 8 ¾ inches

\$300-500



235

Pair of Chinese Bronze Covered Vessels

Pair of Chinese Bronze Covered Vessels each decorated with evenly spaced bosses on a geometric patterned ground

height (taller): 15 ½ inches, width (taller): 7 inches

\$250-450





236
Chinese Painted Pottery Figure of a Camel and Rider

Chinese Painted Pottery Figure of a Camel and Rider (Tang Dynasty), the Bactrian camel is painted in buff ocher and red pigments, depicted with raised head and open mouth as if braying, and laden with a full load of goods and supplies and a foreign rider. The domestication of the bactrian camel was key to the development of the Silk Road trade routes and the successful transport of goods from Asia across large deserts to the European markets
height: 33 inches, width: 22 inches
the result of Oxford Authentication thermoluminescence test no. C105a47 is consistent with the dating of this lot

\$2,000-4,000

237
Two Chinese Large Painted Pottery Figures of Dancers (Tang Dynasty)

height: 24 inches, width: 14 ½ inches

\$800-1,200



238
Pair of Chinese Painted Pottery Equestrian Musicians

Pair of Chinese Painted Pottery Equestrian Musicians (Tang Dynasty), one playing a pipa or lute seated on a horse standing four square, the other playing the suona seated on a prancing horse, each with traces of pigments
height (larger): 15 ½ inches, width (larger): 13 ½ inches

\$800-1,200



239
Chinese Painted Pottery Figure of a Prancing Horse (Tang Dynasty)

height: 18 1/4 inches

width: 19 inches

\$500-800



240
Pair of Chinese Straw Glazed Pottery Caparisoned Horses (Sui-Tang Dynasty)

height (larger): 10 ¾ inches, width (larger): 11 inches

\$400-600



241
Two Chinese Painted Pottery Equestrian Figures

Two Chinese Painted Pottery Equestrian Figures (Tang Dynasty) mostly decorated with red, cream and black pigments
height (larger): 18 ½ inches, width (larger): 15 inches

\$500-700





242

Chinese Painted Pottery Figure of a Kneeling Camel

Chinese Painted Pottery Figure of a Kneeling Camel (Eastern Wei Dynasty) with saddle and pack

height: 10 inches, width: 12 ½ inches

the result of Oxford Authentication thermoluminescence test no. C100b7 is consistent with the dating of this lot

\$450-650



243

Chinese Green Glazed Pottery Lamp (Han Dynasty)

height: 30 inches, diameter: 14 1/2 inches

the result of Daybreak thermoluminescence test no. 373A11 is consistent with the dating of this lot

\$800-1,200



244

Chinese Large Green Glazed Pottery Model of a Watchtower

Chinese Large Green Glazed Pottery Model of a Watchtower (Han Dynasty), the tower composed of the ground and two additional stories, the roofs with decorative tiles at each of the corners, and the windows with lattice work

height: 46 inches, width: 16 inches

the result of Daybreak thermoluminescence test no. 373A25 is consistent with the dating of this lot

\$600-800



245

Chinese Green Glazed Ceramic Model of a Watchtower

Chinese Green Glazed Ceramic Model of a Watchtower (Han Dynasty), the base with a gated entrance and courtyard, the structure two stories, each story defined by a balcony and roof, and each roof decorated with foliate tiles at each of the corners

height: 46 inches, width: 20 inches

the result of Daybreak thermoluminescence test no. 373A29 is consistent with the dating of this lot

\$600-800

246

Chinese Pottery Model of a Granary

Chinese Pottery Model of a Granary (Eastern Han Dynasty), rectangular granaries of this form were used in Northern China, whereas the cylindrical granaries were found in the southern provinces

height: 23 inches, width: 17 inches

\$300-500



247

Four Chinese Stoneware Vessels

Four Chinese Stoneware Vessels including two ceramic bowls and a pair of celadon glazed lidded vessels with dragon and lion motifs

height (largest): 9 ½ inches, diameter (largest): 3 ½ inches

\$100-200



248

Chinese Green Glazed Model Well (Han Dynasty)

height: 17 inches, width: 10 inches

\$300-500



249

Three Chinese Green and Amber Glazed Pottery Models of Chests (Ming Dynasty)

height (each): 5 ½ inches, width (each): 5 ¾ inches

\$200-400



250

Chinese Green Glazed Pottery Model of a Chest

Chinese Green Glazed Pottery Model of a Chest (Han Dynasty) with removable lid

height: 6 ½ inches, width: 10 inches

the result of Daybreak thermoluminescence test no. 373A18 is consistent with the dating of this lot

\$200-400





251
Chinese Painted Stone Figure of Standing Buddha

Chinese Painted Stone Figure of Standing Buddha (Sui Dynasty Style) with detachable stone base
height: 59 ½ inches, width: 15 inches

\$800-1,200

252
Chinese Large Painted Stone Figure of Buddha

Chinese Large Painted Stone Figure of Buddha with gilt skin and burgundy and green robes, the figure depicted seated and with lotus blossoms supporting each foot
height: 49 inches, width: 16 ½ inches

\$600-800



253
Chinese Carved and Painted Stone Figure of Buddha

Chinese Carved and Painted Stone Figure of Buddha (Sui Dynasty Style) with gilt skin and a robe painted in green, yellow and red pattern; base doesn't match statue
height: 57 ¾ inches, width: 12 ½ inches

\$600-800



254
Two Chinese Stone Figures of Luohans

height: 47 ½ inches, width: 12 ½ inches

\$400-600



255
Pair of Large Chinese Pottery Tomb Tiles

Pair of Large Chinese Pottery Tomb Tiles (Han Dynasty) with impressed geometric designs
height: 44 inches, width: 18 ¼ inches

\$400-600



256
Chinese Grey Pottery Tomb Support

Chinese Grey Pottery Tomb Support (Han Dynasty) with impressed designs
height: 35 ½ inches, width: 7 inches
the result of Daybreak thermoluminescence test no. 363A231 is consistent with the dating of this lot

\$400-600



257
Pair of Chinese Grey Pottery Tomb Columns

Pair of Chinese Grey Pottery Tomb Columns (Han Dynasty) with impressed designs
height: 45 ¾ inches, width: 8 inches
the result of Daybreak thermoluminescence test no. 363A8 is consistent with the dating of this lot

\$400-600





258

Chinese Carved Stone Buddha Head

Chinese Carved Stone Buddha Head carved with a serene expression, the typical 'snail shell' curls and elongated earlobes

height (head): 11 ½ inches, height (overall): 18 inches

\$400-600



259

Chinese Carved and Painted Stone Head of a Luohan

height: 5 ½ inches, width: 4 inches

\$200-400



260

Cambodian Carved Stone Head of Harihara

Cambodian Carved Stone Head of Harihara, simultaneously showing the male and female aspects

height: 14 ¾ inches, width: 5 inches

\$400-600



261

Cambodian Carved Sandstone Head of a Buddha

Cambodian Carved Sandstone Head of a Buddha attached to a modern stand

height (head): 10 1/2 inches, height (overall): 15 ½ inches

\$300-500

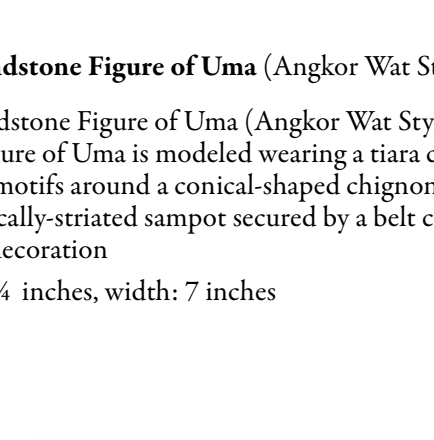
262

Khmer Sandstone Figure of Uma (Angkor Wat Style)

Khmer Sandstone Figure of Uma (Angkor Wat Style), the standing figure of Uma is modeled wearing a tiara carved with floral motifs around a conical-shaped chignon, along with a vertically-striated sampot secured by a belt carved with geometric decoration

height: 28 ¼ inches, width: 7 inches

\$800-1,200



263

Khmer Sandstone Figure (Angkor Wat Style)

Khmer Sandstone Figure (Angkor Wat Style), the standing figure with bare chest and wearing a diaphanous ankle length sampot

height (overall): 30 ¼ inches, height (body): 25 ¾ inches

\$400-600



264

Three South East Asian Stone Linga

Three South East Asian Stone Linga each with a cuboid base, an octagonal body and a cylindrical top; the form of these three carvings is the same as 10th Century examples

height: 17 ¾ inches, width: 6 inches

\$300-500



265

Two Chinese Soapstone Seals

Two Chinese Soapstone Seals, each surmounted with a carved dragon

height (larger): 5 ½ inches, width (larger): 2 ½ inches

\$100-200





266

Pair of Chinese Hardwood Demilune Tables

Pair of Chinese Hardwood Demilune Tables designed with pegs and grooves to connect and form a round table, each with solid center shelf over a cockpen-design lower tier
each 29 ½ x 20 ¼ x 10 ¼ inches, overall diameter: 19 ½ inches

\$1,500-2,500

268

Chinese Coromandel Lacquer Twelve Panel Screen

Chinese Coromandel Lacquer Twelve Panel Screen (18th/19th Century) with warm undertones and overall with traditional decoration and panels of characters, scholar objects, auspicious birds, animals, and mountainous landscapes with pagodas
108 x 207 x ¾ inches

\$1,000-2,000



267

Chinese Coromandel 'Hundred Boys' Panel

Chinese Coromandel 'Hundred Boys' Panel (late Qing Dynasty), possibly a fragment from a floor screen
32 x 17 inches

\$300-500

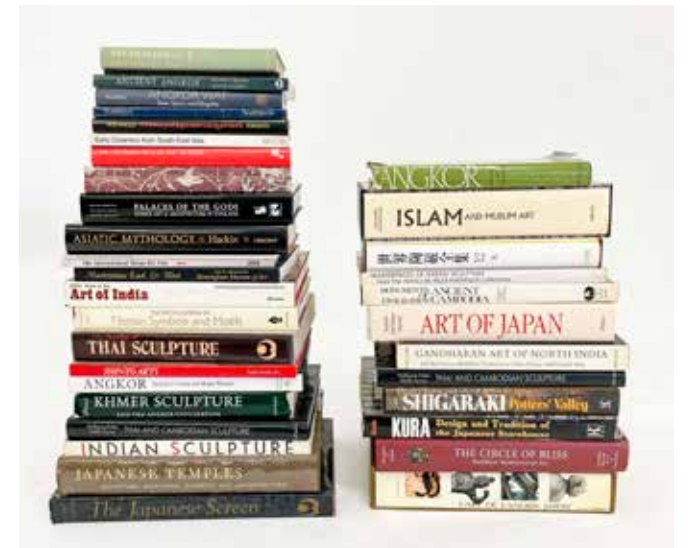
269

Two Pairs of Chinese Stools

Two Pairs of Chinese Stools
each seat inset with woven panel
height: 19 inches
width: 16 ¾ inches

\$1,500-2,500







Courtesy of Andrew Federico

Session II Antiques and Fine Art

301

Régence Gilt-Bronze Mounted Commode

Régence Gilt-Bronze Mounted Commode (first quarter 18th century) the tulipwood case with two short and two long amaranth and kingwood inlaid drawers, the ormolu mounts with rocaille scrolling details, with Rouge Royale marble top
33 ½ x 52 x 25 inches

\$2,000-4,000



302

Pair of Régence Caned Side Chairs

Pair of Régence Caned Side Chairs (first half 18th century) the frames with floral and rocaille scroll carvings and yellow Chinoiserie upholstered cushions (not pictured)

38 ½ x 20 x 19 inches

\$400-600



303

Louis XIV Gilt-Bronze Cassolette

in the form of a pot-pourri, the pierced cover above a guilloché border flanked by female term supports, on a base cast with ribbon-tied profile medallions over acanthus cast paw feet

height 12 ½ inches

very close to designs by Jean Bérain (French, 1640-1711)

similar examples were sold as a pair at Sotheby's, London in *La Collection d'un Grand Amateur Français: Important Furniture, Paintings and Works of Art*, 7 December 2000, lot 64

\$1,500-2,500



304

Louis XV Giltwood Console

Louis XV Giltwood Console (18th century and later elements) with undulating rocaille scrolling details
29 ¾ x 35 ½ x 19 inches

\$1,500-2,500





305

Pair of Louis XV Carved Beechwood Fauteuils

Pair of Louis XV Carved Beechwood Fauteuils (18th century) upholstered with nailhead trim and cushion
36 ½ x 27 x 23 ½ inches

\$1,000-2000



306

Régence Gilt-Bronze Mounted Commode

Régence Gilt-Bronze Mounted Commode (second quarter 18th century), the walnut case with two short over two long amaranth inlaid drawers, ormolu mounts with rocaille scrolling details, with Rouge Royale marble top
31 ½ x 24 ½ x 16 ¾ inches

\$2,000-3,000



307

Louis XV Duchesse Brisée

Louis XV Duchesse Brisée (mid-18th century), the fauteuil with caned seat and carved beechwood frame, upholstered cushions and arms, with ottoman
37 x 31 x 28 ½ inches, ottoman: 16 ½ x 31 x 18 inches

\$1,000-2,000



308

Louis XV Gilt-Bronze Mounted Commode

Louis XV Gilt-Bronze Mounted Commode (mid-18th century), the kingwood and amaranth case with crossbanded inlaid drawers and marble top
32 x 25 ¾ x 18 inches

\$800-1,200

309

Louis XV Gilt-Bronze Mounted Bibliotheque

Louis XV Gilt-Bronze Mounted Bibliotheque (18th century), the kingwood and walnut bookcase with wire-grilled doors revealing three adjustable shelves to interior
89 ¼ x 61 ¼ x 21 ¼ inches
ex-Chester Dale Collection

\$1,000-1,500



310

Pair of Louis XV Chevigny Stamped Bergères

Pair of Louis XV Chevigny Stamped Bergères (late 18th century), each with arched back and nailhead-trimmed upholstery, the frame with rosette details and raised on tapered fluted legs, underside stamped CHEVIGNY (Claude Chevigny, French, maitre 1768)
37 ½ x 26 ½ x 24 inches

\$1,000-1,500



311

Louis XIV Carved and Upholstered Bench

Louis XIV Carved and Upholstered Bench (circa 1700), overall with Baroque motif carvings, the upholstered top with nailhead trim
18 x 33 ½ x 21 inches

\$600-800



312

Pair of Louis XV Carved Beechwood Fauteuils

Pair of Louis XV Carved Beechwood Fauteuils (18th century), the frames with floral-accented carving and beige upholstery
36 ¾ x 27 ½ x 23 ¼ inches

\$1,000-2,000





313

after Giambologna, Italian (18th / 19th century)

Figure of Architecture

bronze, seated on an integrally cast plinth, mounted on a green marble base

height (bronze): 14 inches, height (overall): 17 ¾ inches

according to Mr. Rondina's records, this bronze figure was authenticated by Dr. Yvonne Hackenbroch, former curator at the British Museum and later the Metropolitan Museum of Art, as being by Giambologna (Italian, 1529-1608)

a similar example is found in the Museum of Fine Arts, Boston

\$10,000-15,000



314

Italian Carved Walnut Figure of Atlas

Italian Carved Walnut Figure of Atlas (18th century), the nude figure supporting a smooth globe, the plinth base decorated with egg and dart pattern over acanthus leaves

height: 32 inches

with illegible incised inscription to tree trunk

\$4,000-6,000



315
French Gilt and Patinated Bronze Figural Mantel Clock
French Gilt and Patinated Bronze Figural Mantel Clock (19th century) modeled as a hunter beside a tree with birds, the dial with Roman numerals and two wind holes, the frieze panel decorated with figures in a littoral scene with nautical themes, all on a stepped plinth base accented with laurel leaves
24 x 17 x 6 inches
\$1,000-2,000

316
Pair of Louis XV Gilt-Bronze Sconces
Pair of Louis XV Gilt-Bronze Sconces with three lights supported by foliate-cast arms and varyingly styled nozzles
19 ¼ x 17 ½ x 9 ¼ inches
\$700-1,000



317
Pair of Louis XV Gilt-Bronze Candlesticks
Pair of Louis XV Gilt-Bronze Candlesticks of baluster form with shaped circular bases, cast with scrolling rocaille and flowers
height: 10 ¾ inches
\$400-600



318
Group of Three Louis XV Gilt-Bronze Candlesticks
Group of Three Louis XV Gilt-Bronze Candlesticks, including one candlestick of baluster form with scrolling rocaille decoration, purportedly by Juste-Aurèle Meissonnier (French, 1695-1750), together with a pair of candlesticks of similar design with shaped circular bases and cast with scrolling rocaille and foliage
height (taller): 11 inches, height (pair): 10 inches
\$700-1,000

319
Pair of Louis XVI Gilt-Bronze Sconces
Pair of Louis XVI Gilt-Bronze Sconces, each headed by an anthemion back-plate issuing three scrolling branches with eagle head terminals supporting cast acanthus leaf bobeches, above a foliate-bearded mask
9 ¼ x 14 x 7 inches
\$600-800



320
Pair of Louis XVI Gilt-Bronze Candelabra, in the manner of Jean-Charles Delafosse (late 18th century)
with two lights, the stem as a fluted column flanked by foliate-cast candlearms, topped by a cassollette with berried laurel swag and surmounted by a berry finial
height: 11 ⅝ inches
sold by Joseph Rondina Antiques to William S. Paley, subsequently Lot 245 in Property from the Collection of William S. Paley, Sotheby's, New York, 4 October 1991, and purchased back by Joseph Rondina
\$800-1,200

321
Pair of French Directoire Gilt-Bronze Candlesticks
'flambeaux en athénienne', the scrolled uprights terminated by paw feet and joined by a circular base with rosette center, and with flambeau snuffer caps
height (with snuffer): 10 ¾ inches
after models attributed to bronziers André-Antoine Ravrio (1759-1814) and Claude Galle (1759-1815)
\$1,000-2,000



322
French Neoclassical Gilt Bronze And Blue Enamel Cassollette
French Neoclassical Gilt Bronze And Blue Enamel Cassollette (19th century), the lid with finial over a pierced collar, the egg-form body raised on a lobed socle above a square plinth base, with acanthus and laurel leaf motifs
10 ¾ x 5 ¼ x 5 inches
\$500-800



323

Louis XVI Mahogany Semainier

Louis XVI Mahogany Semainier (late 18th century), the tall chest of seven drawers with gilt-metal banding and fluted details to the case, stamped to top 'COURTE' for Jean-Baptiste Courte (French 1749-1843, maitre 1777)

57 x 38 ¼ x 17 inches

\$1,000-1,500



325

Louis Philippe French Gilt Bronze Mounted Mahogany Dining Table

Louis Philippe French Gilt Bronze Mounted Mahogany Dining Table (mid-19th century), the extension table with gilt banding to the edges and legs, with two leaves

29 x 44 x 23 ½ inches, width extended: 86 inches

\$800-1,200



324

Louis XVI Joseph Canabas Stamped Gilt-Bronze Mounted Writing Table

Louis XVI Joseph Canabas Stamped Gilt-Bronze Mounted Writing Table (late 18th century), a galleried ratcheted candle stand raised over the top with Neoclassical motifs centered with a folding writing slide, with allegorical plaque of children and a goat representing Autumn, the sides with drawers and raised on a tripod base, stamped CANABAS for Joseph Gengenbach (French 1712-1797, maitre 1766) and JME for Jurande Menuisiers Ebénistes

36 ¾ x 21 x 14 ¾ inches

\$1,500-2,500



326

Four Louis XVI Stained Beechwood Fauteuils

Four Louis XVI Stained Beechwood Fauteuils (late 18th century), the carved frames upholstered with nailhead trim, raised on tapered fluted legs

34 ½ x 22 ½ x 23 ½ inches

\$800-1,200



Courtesy of Andrew Federico

327

Louis XVI Pioniez Stamped Gilt-Bronze Mounted Cabinet

Louis XVI Pioniez Stamped Gilt-Bronze Mounted Cabinet (third quarter 18th century), the Breche d'Alep marble top over the case centered with a floral marquetry inlaid door, throughout with rosette and Neoclassical motif mounts, top of case with maker stamp for Pierre Pioniez (French, maitre 1765) and JME for Jurande Menuisiers Ebénistes

39 x 40 x 17 ½ inches

\$2,000-4,000





328

Louis Vuitton Monogram Canvas Trunk

Louis Vuitton malle-bibliothèque / travel library trunk
height: 18 1/4 inches, width: 26 1/2 inches
exterior with 'LV' monogram canvas, lozine trim, brass hardware stamped '060816' with maker's marks, and two leather side handles, underside mounted with wooden slats
the interior with felted lining and fitted with shelves and straps to center and doors, with additional label numbered '769474'

\$6,000-9,000



329

Louis Vuitton Monogram Canvas Suitcase

Louis Vuitton Monogram Canvas 60cm Suitcase, the hard-sided exterior with 'LV' monogram canvas, brass hardware with maker's marks, and a leather handle, the interior fitted with straps and with Louis Vuitton label
height: 16 1/2 inches, width: 23 3/4 inches

\$700-1,000



331

Boucheron French Art Deco Silver, Gold, And Sapphire Minaudière Compact

Boucheron French Art Deco Silver, Gold, And Sapphire Minaudière Compact, the case with wave design and accented with a gold plaque and seven sapphires, interior stamped 'Boucheron Paris' and with assay marks
weight: 342g inclusive 5 1/8 x 3 3/8 x 5/8 inches

\$1,500-2,000



330

Louis Vuitton Monogram Canvas Garment Suitcase

Louis Vuitton Monogram Canvas Garment Suitcase, the soft-sided bag with 'LV' monogram canvas and leather sides, leather handle with a leather travel tag (unmarked), brass feet and zipper closure cloth-lined interior with three hangers
height: 20 inches, width: 20 inches

\$200-400



332

Missiaglia Italian Silver Coffee and Tea Harlequin Service

Missiaglia Italian Silver Coffee and Tea Harlequin Service (first quarter 20th century), Venetian, with lobed decoration comprising a coffeepot, a teapot, a pitcher, a creamer, a covered sugar bowl, a nut/candy dish, the bases with maker and assay marks, the pitcher additionally marked 900, total weight 2,680g together with an associated silver-plate tray with monogram JR coffee pot: 8 3/4 x 7 1/2 x 4 3/4 inches, tray: 20 1/2 x 16 1/4 inches

\$1,500-2,000



333

Louis Valtat, French (1869-1952)

Vase d'Anémones et Jonquilles (Vase with Anemones and Daffodils) (circa 1906)

oil on card mounted to canvas

initialed 'L.V.' lower right

9 ½ x 13 inches, frame dimensions: 17 ½ x 21 x 2 inches, carved giltwood frame

Wally Findlay Galleries ,accompanied by a photocopied certificate of authority from Louis André Valtat, 1969 (grandson of Louis Valtat)

\$10,000-15,000

334

James Hiroshi Suzuki, American (b. 1932)

Divulge

oil on canvas

signed lower right

30 x 35 ⅝ inches

frame dimensions: 30 ⅝ x 35 ¾ x 1 inches, strip frame

frame verso inscribed in ink and with label: 'Personal Property of Sarah Hunter Kelly', Dayton Art Institute paper label affixed to frame verso, Duveen Graham Gallery Label verso

\$4,000-6,000



335

Lawrence Calcagno, American (1913-1993)

White Night (circa 1954-56)

oil on canvas

signed verso

39 ½ x 32 inches, unframed

Martha Jackson Gallery, NY

\$1,000-2,000





336

Leonor Fini, Argentine/Italian (1908-1996)

Untitled (Portrait of a Wild-Haired Youth)

oil and ink on panel

signed lower right

4 x 3 inches, unframed

\$2,000-4,000

338

Artur Bual, Portuguese (1926-1999)

Paisagem Humana (Human Landscape)

oil on masonite

signed lower right

33 ½ x 24 ¼ inches

inscribed with artist's name and title to verso, along with artist's bio with illegible stamp

\$1,500-2,500



337

Jacques-Émile Blanche, French (1861-1942)

Portrait of Sergei Diaghilev (1911)

oil on canvas

signed lower left

22 x 18 inches

inscribed with sitter's name to stretcher

\$1,500-2,500



339

Dimitry Merinoff, Russian (1896-1971)

Untitled (Figures and Horse) (1928)

oil on canvas

signed lower right and verso

72 x 52 ½ inches

inscribed to stretcher '5 rue Vineuse Passy XVI'

\$800-1,200





340

Greek Terracotta Figural Fragment

Greek Terracotta Figural Fragment (4th Century BCE), a fragment of a bust with acanthus design on the sides, possibly an architectural fragment, preserving pigment throughout, raised on ebonized base
height: 13 ½ inches, width: 10 ¼ inches

\$800-1,200



341

Tancrède Synave, French (1870-1936)

Première à Paris du 'Spectre de la Rose' (Premier in Paris of 'The Spirit of the Rose') (1914)

oil on canvas

signed lower right

depicts the 1911 premiere of Diaghilev's production of 'Le Spectre de la Rose', danced by Nijinsky and Karsavina

32 x 39 ½ inches

title inscribed to verso

\$400-600



342

George D'Almeida, French (b. 1934)

Study XI (1964)

oil on canvas

signed verso

58 x 42 ½ inches

\$600-800

343

Baroque Carved Limed Wood Architectural Element

Baroque Carved Limed Wood Architectural Element (17th/18th century), the figure reclined in gentle repose
16 x 32 ¼ x 4 ½ inches

\$400-600



344

George III Giltwood Bracket

George III Giltwood Bracket (circa 1800) having shaped plateau with Neoclassical swag motifs and acanthus details
18 ½ x 19 ¾ x 9 inches

\$600-600



345

Group of Three Giltwood Brackets

Group of Three Giltwood Brackets (circa 1900), including one pair of Rococo Revival brackets with rocaille scrolling details, together with a smaller Neoclassical style giltwood bracket
pair: 13 x 12 ¾ x 9 inches, smaller: 8 x 8 ½ x 4 ¼ inches

\$400-600



346

Rococo Style Wrought Iron Console

Rococo Style Wrought Iron Console, the table d'applique with scrolling details and marble top
21 x 22 x 10 ½ inches

\$400-600





347

Pair of Swedish Rococo Gilt Mirrors

Pair of Swedish Rococo Gilt Mirrors (circa 1800)
after a model by Gustav Precht, each pediment with floral bouquet
urns over the rectangular mirror plate bordered with etched panels
52 x 29 ½ x 2 inches

\$10,000-15,000



348

Louis XV Giltwood Pier Mirror

Louis XV Giltwood Pier Mirror (18th century), overall
with rocaille scrolling details and floral accents
75 x 32 ¾ x 4 inches

\$800-1,200



349

Rococo Style Giltwood Mirror

Rococo Style Giltwood Mirror of Royal interest,
surmounted with a heraldic model of an English Tudor
(St. Edward's) crown, the frame with scrolling and foliate
motifs around the mirror plate
33 x 20 x 4 inches

\$600-800



350

French Neoclassical Painted Trumeau Mirror

French Neoclassical Painted Trumeau Mirror (circa 1800),
the painted frame with a carved and gilt hunting trophy
over the rectangular frame
65 x 23 ½ x 1 ¾ inches

\$600-800



351

Italian Rococo Giltwood Mirror

Italian Rococo Giltwood Mirror (circa 1800) the arched
frame with Venetian etching to the border and girandole
candle holders to the base
41 ½ x 21 ¼ x 2 inches

\$800-1,200



352

Pair of French Neoclassical Style Gilt-Bronze Guéridons

Pair of French Neoclassical Style Gilt-Bronze Guéridons, the round black marble tops over a lower shelf supported by three eagle-head accented legs terminating on monopodial claw feet
29 x 31 x 31 inches

\$2,000-3,000



353

French Neoclassical Style Gilt-Bronze Guéridon

French Neoclassical Style Gilt-Bronze Guéridon, the round white marble top over a lower shelf supported by three ram-head accented legs terminating on monopodial hoof feet, the stretcher with urn-form finial
29 ½ x 26 ½ x 26 ½ inches

\$1,000-2,000



354

Wrought Iron Bistro / Garden Table and Chairs

Wrought Iron Bistro / Garden Table and Chairs, the table with white marble top over a faux-marble painted top raised on an iron base, the chairs with curved backs, the legs terminating on pad feet
chairs 34 ½ x 17 ¼ x 18 inches, table 29 x 30 x 30 inches

\$400-600



355

Empire Style Steel and Brass Daybed

Empire Style Steel and Brass Daybed, the bed with tubular steel bars, brass knobs and accents, raised on four wood-wheeled casters
47 ¼ x 80 ½ x 45 ¼ inches

\$400-600



356

Léon Bakst, Russian (1866-1924)

Narcisse Béothien, 1911
silkscreen on paper with gold pigment highlights
signed in plate lower right
sight: 20 ⅞ x 16 ⅞ inches

\$300-500

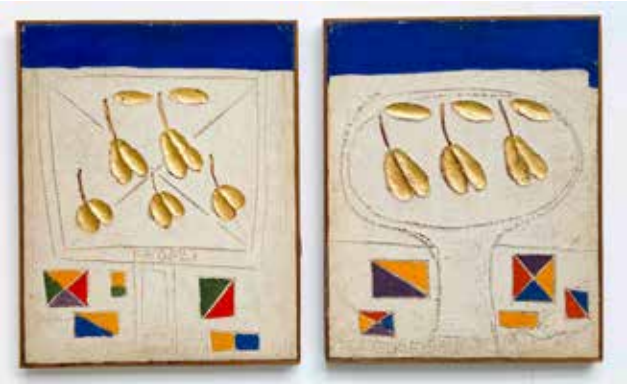


358

Continental School (18th-19th century)

Two Floral Still Lifes
oil on canvas
each with paper label remnants affixed to stretcher, with illegible inscriptions
16 ¾ x 13 ⅞ inches, unframed

\$400-600



357

Francesco Fedeli, Italian (1911-1998)

Frutti-Dorati (Golden Fruits), 2 Works (1977)
mixed media on panel including oil, gilding, and plaster
each with incised signature recto
19 ¾ x 16 inches, frame dimensions: 20 ⅞ x 16 ⅞ x 1 inches, strip frame
each with artist's label affixed to verso

\$400-600



359

Continental School, (18th-19th century)

Two Portraits of Adam and Eve
oil on canvas
17 ⅞ x 13 ½ inches, unframed

\$400-600



Joseph Rondina Antiques circa 1960



360

Lucien Adrion, French (1889-1953)

Untitled (Beach Scene) (1936)

watercolor on paper

signed lower right

sight: 22 x 14 ¾ inches, frame dimensions:

29 1/4 x 22 x 1 1/2 inches, wood frame

with glazing

Christie's label affixed to frame verso

\$600-800



362

Continental School (18th-19th century)

Study of a Sentinel Lion

ink, wash, and graphite on paper

inscribed 'March Massimi' lower left

sight: 10 x 12 ⅞ inches

\$400-600



361

Italian School (18th century)

Scene of Sacrifice

ink, wash, red chalk, heightened with white/

gray on paper

sight: 7 ⅞ x 11 ⅞ inches

\$400-600



363

Hubert Robert (attributed), French
(1733-1808)

Study of the Medici Vase

red chalk on paper

sheet: 9 ⅛ x 6 ¾ inches

a similar sketch of the Medici vase was
drawn by Charles Errard the Younger
(French, 1606-1689) circa 1680

\$600-800



364

Louis Valtat, French (1869-1952)

Untitled (Figure on Beach)

watercolor on paper

signed with initials 'L.V.' lower right

sight: 4 ¾ x 5 ¼ inches

\$600-800



365

French School (18th century)

Garden Design

ink on paper

signed lower left 'H. Fuessli...'

inscribed lower left: 'Deßsiné au Jardin de M. de Montmorin, Rue Plumet à Paris. 1792'

sheet: 9 ½ x 11 inches

\$400-600



366

Artist Unknown

Carriage Horses

oil on panel

signed with initials 'GH' lower right

name plaque to frame: 'G. Houston'

5 ½ x 7 inches

\$400-600



367

Continental School (18th-19th century)

Two Town Scenes

ink and wash on paper

sheet: 10 ¾ x 7 ¾ inches, frame dimensions: 15 ½ x 11 ¾ x ¾ inches, wood frame with glazing

each appear to have faint blind stamps along upper half

one frame with 'Hammerstein' label affixed to verso

\$400-600

368

Louis XV Style Ebonized Commode

Louis XV Style Ebonized Commode (19th century and later elements), the gilt-bronze mounted case with two drawers and marble top, with key

31 ½ x 24 ¾ x 17 inches

\$600-800



369

Louis XVI Style Fruitwood And Marble Night Table

Louis XVI Style Fruitwood And Marble Night Table (19th century), the gray marble top with gilt-metal band over the case with fluted details, cabinet with two drawers, raised on tapered legs terminating on casters, with key

29 ½ x 19 x 12 ¾ inches

\$400-600



370

Pair of Louis XVI Style Fauteuils

Pair of Louis XVI Style Fauteuils (19th century), the carved frames upholstered and raised on tapered legs

37 x 24 ½ x 21 inches

\$600-800



371

Louis XVI Lacquer and Tulipwood Cabinet

Louis XVI Lacquer and Tulipwood Cabinet, with a gilt-metal gallery over the top and upper door panels with Chinoiserie design lacquer, the lower doors and sides with herringbone parquetry

66 ¾ x 44 ½ x 15 inches

\$800-1,200





372

Louis XV Gilt-Bronze Mounted Bureau Plat

Louis XV Gilt-Bronze Mounted Bureau Plat, the desk with inset leather writing pad above three drawers to one side, raised on cabriole legs

30 ½ x 62 ½ x 31 ¼ inches

\$1,000-1,500



373

Louis XVI Style Mahogany Console Desserte

Louis XVI Style Mahogany Console Desserte (19th century), the gilt-metal mounted table with marble top over the two tiers supported by fluted legs, with key

33 ½ x 34 ½ x 15 ½ inches

\$800-1,200



374

Pair of Italian Neoclassical Painted Panels

Pair of Italian Neoclassical Painted Panels (19th century), decorated with scrolling motifs

sight (each): 63 x 8 inches, frame dimensions: 73 1/2 x 18 3/4 x 2 inches, wood frame

\$400-600



375

Continental School (18th- 19th century)

Portrait of a Man

oil on canvas

featuring a man in wig and red attire, with a putto holding an open book

15 ¼ x 11 ¼ inches

\$400-600



376

Continental School, (18th-19th century)

Two Portraits of Musicians

oil on card

sight: 7 ¾ x 6 inches, frame dimensions: 10 ⅞ x 9 ⅞ x ¾ inches, wood frame with glazing

\$400-600



Bergdorf Goodman window 1961 for the Revlon launch of Louis XIV Red lipstick, antiques courtesy of Joseph Rondina Antiques,



377

Gaspar Antoine de Bois-Clair (attributed), French (1654-1704)

Double-Portrait in Lenticular Relief

oil on wood strips, laid on round panel

diameter: 15 ½ inches, frame dimensions: 21 ¾ diameter x 1 inches, wood frame

\$400-600



378

Various Artists (20th century)

Three Designs for Tapestries

gouache on pulp paper
sight (largest): 5 3/4 x 7 1/2 inches, frame
dimensions (each): 13 3/4 x 17 3/4 x 5/8
inches, wood frame with glazing, two in
frames, one in matting

framed pieces with paper label affixed to
verso, one inscribed 'Francis Jourdain'
matted piece inscribed 'Jean Burkhalter'
to verso

Designs dating from the era when
Madame Marie Cuttoli tried, beginning
in 1933, to revive the Aubusson tapestry
industry in France. She was aided by
such famous artists as Pablo Picasso,
Jean Lurcat, Fernand Leger, and others
of the Cubist school. Their designs were
reproduced in this manner in limited
numbers.

\$400-600



379

Various Artists (20th century)

Four Designs for Tapestries

gouache on pulp paper
sight (largest): 5 1/2 x 7 3/8 inches, frame
dimensions (each): 13 3/4 x 17 3/4 x 5/8
inches, wood frame with glazing

all with paper label affixed to verso and
inscribed illegibly in ink, two possibly
inscribed 'Jourdain'

Designs dating from the era when
Madame Marie Cuttoli tried, beginning
in 1933, to revive the Aubusson tapestry
industry in France. She was aided by
such famous artists as Pablo Picasso,
Jean Lurcat, Fernand Leger, and others
of the Cubist school. Their designs were
reproduced in this manner in limited
numbers.

\$400-600

380

Various Artists (20th century)

Four Designs for Tapestries

gouache on pulp paper
sight (largest): 5 3/8 x 7 3/8 inches, frame
dimensions (each): 13 3/4 x 17 3/4 x 5/8 inches,
wood frame with glazing, three in frames,
one in matting

framed pieces with paper label affixed to
verso, two framed pieces and matted piece
inscribed 'Francis Jourdain' to verso, one
framed piece inscribed 'Kinoshiba' to verso

Designs dating from the era when Madame
Marie Cuttoli tried, beginning in 1933,
to revive the Aubusson tapestry industry
in France. She was aided by such famous
artists as Pablo Picasso, Jean Lurcat, Fernand
Leger, and others of the Cubist school. Their
designs were reproduced in this manner in
limited numbers.

\$400-600



381

Various Artists (20th century)

Three Designs for Tapestries

gouache on pulp paper
sight (largest): 5 3/8 x 7 3/4 inches, frame
dimensions (each): 13 3/4 x 17 3/4 x 5/8 inches,
wood frame with glazing

all with paper label affixed to verso, one
inscribed illegibly in ink, one inscribed 'Jean
Burkhalter'

Designs dating from the era when Madame
Marie Cuttoli tried, beginning in 1933,
to revive the Aubusson tapestry industry
in France. She was aided by such famous
artists as Pablo Picasso, Jean Lurcat, Fernand
Leger, and others of the Cubist school. Their
designs were reproduced in this manner in
limited numbers.

\$400-600





382

Henri Baptiste Lebasque, French (1865-1937)

Untitled (Study of a Bather)

watercolor and graphite on paper

signed lower left

sight: 9 ⅛ x 3 inches, frame dimensions: 14 x 7 ¾ x ½ inches,
wood frame with glazing

\$800-1,200

383

Artist Unknown (20th century)

Village Scene

gouache on paper

sight: 11 ⅜ x 15 ⅝ inches, frame dimensions: 20 ¾ x 24 ¼ x 1 ½ inches wood frame with glazing

inscribed to frame verso: ‘Longnecker’

\$300-500

384

Pair of Grand Tour Medallions Of Roman Emperors

Pair of Grand Tour Medallions Of Roman Emperors (19th century) alabaster and hardstone, each in gilt-metal frames and centered with a portrait of a Roman Emperor - Servius Galba Caesar Augustus and Emperor Marcus Otho Caesar Augustus, each inscribed

5 ¼ x 3 ¼ inches

\$400-600

385

Sapphire Jewelry Group

Sapphire Jewelry Group, lot includes: 14k gold ring with faceted-cut solitaire cornflower sapphire approx 8mm x 12mm in prong setting, marked ‘14’ to band; ring with three sapphire cabochons approx 6mm x 5mm, 6mm x 4mm, 6mm x 5mm with bicolored gold band, incised with numbers to interior; pair of gold cufflinks with faceted-cut cornflower sapphires approx 9mm x 11mm, engraved ‘J.F.R.’

ring size (larger): 11.5 inches, ring size (smaller): 9 inches

\$300-500

386

Augustus Edwin John, British (1878-1961)

Untitled (Portrait in Profile)

graphite on paper

signed lower left

sight: 10 ⅜ x 5 ⅝ inches

\$1,000-1,500

387

Books - Arte Italiana, Decorativa e Industriale, L’Illustration Journal Universel

Books - Arte Italiana, Decorativa e Industriale, L’Illustration Journal Universel, bindings: Italian Decorative and Industrial Arts, 1890-1895, Volumes I, II, III, IV, Folio (fo), brown marbled board with leather spines, gilt-edge pages and marbled endpapers, printed in Venice, Italy

bindings: Illustrations (French weekly periodical), Volumes 1888 II, 1890 I, 1898 I, 1903 I & II, Folio (fo), red board with leather spines, marbled page edges and endpapers, printed in France

\$400-600

388

Group of Books on Furniture and Decorative Arts

Group of Books on Furniture and Decorative Arts, quantity of mostly 18th and 19th century French and European subjects including Chinoiserie and cabinet makers

\$400-600

389

Group of Books on Art and Interiors

Group of Books on Art and Interiors, quantity of 18th, 19th and 20th century European subjects including Palaces, Gardens, Style, Design, exhibition and auction catalogs

\$400-600





390

Arts and Crafts Metal Mantel Clock

Arts and Crafts Metal Mantel Clock, the case with parcel-gilt dial raised by four column supports on a hammered plinth
base 15 x 10 x 6 ¾ inches

\$300-500



391

Pair of Limoges Enamel Candlesticks

Pair of Limoges Enamel Candlesticks (19th century), decorated in the Baroque taste with reliefs, armorial shields and portrait cartouches, base with initials AP
6¼ x 5 ¼ x 5 ¼ inches

\$600-800

392

Large Group of Gilt Furniture Mounts and Hardware

Large Group of Gilt Furniture Mounts and Hardware, the assembled gilt-bronze and gilt-metal group in the Louis XV, Louis XVI, Rococo, Empire, Directoire and Neoclassical styles including commode mounts, espagnolettes, appliques and other decorative accents, together with a group of trivets, curtain tiebacks and embroidered items
largest: 13 ¼ x 4 ¾ x 3 ½ inches

\$300-500



393

Pair of Louis XVI Ormolu-Mounted Marble Cassolettes, mounted as lamps

Pair of Louis XVI Ormolu-Mounted Marble Cassolettes, mounted as lamps, the white marble body hung with chains between ram masks over pieds de biche supports, mounted on a circular beaded plinth and raised on feet
height (overall): 18 ½ inches
electrified with double sockets

\$600-800



394

Two French Gilt-Bronze Bouillotte Lamps in the Louis XVI style and Empire style

Two French Gilt-Bronze Bouillotte Lamps in the Louis XVI style and Empire style, overall with Neoclassical details, each with candle holders and two lights, adjustable height with tole shades over round bases
taller: 29 x 14 ¾ inches

\$400-600



395

Pair of Tole and Porcelain-Mounted Sconces

Pair of Tole and Porcelain-Mounted Sconces, Continental, having two lights among porcelain flower sprays
15 ¼ x 11 x 5 inches

\$200-400



396

Two French Gilt-Bronze Bouillotte Lamps in the Louis XVI style and Empire style

Two French Gilt-Bronze Bouillotte Lamps in the Louis XVI style and Empire style, overall with Neoclassical details, each with candle holders and two lights, adjustable height with gilt-accented tole shades over round bases
tallest: 36 inches

\$400-600





397

Pair of Louis XVI Style Gilt-Bronze Candlesticks

Pair of Louis XVI Style Gilt-Bronze Candlesticks, cast overall with leaf-tips, the circular drip-pans above engine-turned and fluted nozzles on a tapering shaft, the circular bases with leaf-tip molding
height: 9 ½ inches

\$400-600



398

Pair of Charles X Style Gilt-Bronze Candlesticks

Pair of Charles X Style Gilt-Bronze Candlesticks, each finely engine-turned with a removable drip-pan and floral and grape decorated nozzle above a banded shaft on a circular spreading base
height: 10 ⅞ inches

\$400-600



399

Rococo Style Gilt-Bronze Lantern

Rococo Style Gilt-Bronze Lantern, the arched supports over the six-sided frame with scrolling rocaille details
21 ½ x 14 ½ inches

\$800-1,200



400

Pair of Louis XVI Style Gilt-Bronze Candelabra

Pair of Louis XVI Style Gilt-Bronze Candelabra, the pot-pourri center flanked by two branches, supported by ram masks over cloven-hoof monopodia and joined on shaped base
height: 9 ½ inches
sold by Joseph Rondina Antiques to William S. Paley, subsequently Lot 244 in Property from the Collection of William S. Paley, Sotheby's, New York, 4 October 1991, and purchased back by Joseph Rondina

\$400-600

401

Gorham Sterling Silver Tea Service

Gorham Sterling Silver Tea Service, comprising a teapot with ebonized handle, a creamer, and a sugar bowl, all with monogram GFR, with marks to base and STERLING and A5005
weight: 410g inclusive, teapot 5 ½ x 6 ¼ x 3 ¾ inches

\$400-600



402

Wedgwood Porcelain Partial Demitasse Service

Wedgwood Porcelain Partial Demitasse Service (c. 1891-1908), stamped maker's mark and impressed year cyphers on undersides,
retailed by William H. Plummer & Co., New York
comprising twelve demitasse cups and nine saucers, in the X8378 and X8793 pattern, of octagonal form consisting of a blue ground with parcel gilt Japanese figural decorations
cup: 2 ½ x 3 ¾ inches, saucer: 1 x 5 ¼ inches
\$200-400



403

Berlin KPM Porcelain Partial Harlequin Service

Berlin KPM Porcelain Partial Harlequin Service (19th century), having underglaze blue sceptre marks, overglaze enamel painter's marks, and iron-red stenciled orb marks for Koniglich Porcelain Manufacture (KPM), Berlin, Germany
grouped lot comprising six teacups, twelve saucers, and eleven luncheon plates of varying sizes
diameter (plates): 7 1/2 inches
\$200-400



404

Group of Large Clear Glass Officer's Goblets

Group of Large Clear Glass Officer's Goblets, 17 goblets with cut glass stems, unmarked, possibly German or Austrian

11 x 4 ¼ x 4 ¼ inches

\$600-800



405

Assembled Group of Etched Glass

Assembled Group of Etched Glass, 23 pieces, some possibly Venetian or Bohemian, in various shapes and patterns comprising wine glasses, champagne flutes and water glasses

tallest 8 ¼ inches

\$400-600



406

Set of Six Banded Onyx Goblets

height: 5 inches, diameter: 3 inches

\$200-400



407

Twelve-Piece Flatware Service

Twelve-Piece Flatware Service, including six knives and six forks with polished agate handles, each knife stamped 'Julius Bell'

length (knife): 8 ¾ inches, length (fork): 7 ¼ inches

\$200-400



CAPSULE

TERMS OF SALE

Bidding in any manner at any of Our auctions or purchasing at any of Our sales indicates that You have read, understood and accepted the following terms and conditions of sale ("Terms and Conditions"). By so bidding and/or purchasing You agree to comply with and be bound by these Terms and Conditions.

Definitions. The following definitions apply to these Terms and Conditions:

- (a) "Bidder", "You" and/or "Your" refer to a person or entity who bids at an auction or purchases at a sale conducted by CAPSULE GALLERY INC..
- (b) "Buyer's Premium" is a payment due CAPSULE GALLERY INC. from a Purchaser equal to 25% of the Successful Bid Amount of a Lot at auction or the purchase price of an Item in a sale.
- (c) "Consignor" refers to a person who has consigned Property to CAPSULE GALLERY INC. for auction or sale.
- (d) "CAPSULE GALLERY INC.," "We", "Us" and/or "Our" refer to Capsule Gallery, Inc.
- (e) "Property", "Lot" and/or "Item" refer to one or more pieces of personal property identified for auction or sale by CAPSULE GALLERY INC..
- (f) "Purchaser" refers to a person who is determined by CAPSULE GALLERY INC. to be the successful Bidder for Property at an auction or who purchases Property at a sale.
- (g) "Successful Bid Amount" is the highest bid for Property acknowledged by CAPSULE GALLERY INC. at an auction.
- (h) "Total Purchase Price" is the Successful Bid Amount at an auction or the purchase price at a sale plus the Buyer's Premium. In addition to the Total Purchase Price other fees, charges and taxes may apply and are due and payable with the Total Purchase Price.

No Representation, Warranty or Guaranty; Duty to Inspect. All Property is sold in "ASIS" / "WHERE-IS" condition and neither CAPSULE GALLERY INC. or the Consignor makes any representation, warranty or guaranty, express or implied, about any Property as to authenticity, origin, description, provenance, condition, attribution, age, date, value, restoration, repair or any other matter, including merchant ability or fitness for a particular purpose. No catalog, written material, photograph or statement by CAPSULE GALLERY INC., its employees or agents, shall be deemed a representation, warranty or guaranty as to any Property described or portrayed. Estimates of value provided in any catalog represent Our opinion of a range of possible values. Actual prices realized may fall below or above this range. Any indications of measurement are approximate. Prospective Bidders are responsible for making all inspections of and determinations about Property, in person or through an agent, before bidding.

Withdrawal. We reserve the right to withdraw any Property from auction or sale at any time for any reason.

Payment, Pickup, Loading and Storage. Payment of the Total Purchase Price of Property plus applicable fees, charges and taxes must be made in full by wire transfer or other acceptable method within seven (7) days after the date of sale of said Property. After approval by CAPSULE GALLERY INC., which it may withhold in its discretion, payment in an amount less than \$5,000.00 may be made by acceptable credit card. Property will not be released to You or Your agent until full payment has been made as provided above. Purchased Property must be picked up within fourteen (14) days after the date of sale of said Property. CAPSULE GALLERY INC. will not be responsible for packing purchased Items or arranging shipping. Packing, lift- ing, loading and moving of Property at CAPSULE GALLERY INC.'s gallery (or elsewhere) is the sole responsibility of the Purchaser. CAPSULE GALLERY INC.'s personnel may, as a courtesy, offer assistance in packing, lifting, loading and/or moving of Property, however neither CAPSULE GALLERY INC. nor its employees or agents shall be liable for any damage or injury that occurs in handling, packing, lifting, loading, moving or transporting of Property whether such damage or injury occurs at CAPSULE GALLERY INC.'s gallery or elsewhere (as, for example, during transit). A storage fee of \$10.00 per Lot per day begins accruing on the 15th day after the date of sale.

Remedies for Nonpayment. If a Purchaser fails to pay the Total Purchase Price of Property plus applicable fees, charges and taxes in full by wire transfer or other acceptable method within seven (7) days after the date of sale, in addition to other remedies available to Us and the Consignor by law, We may retain as damages all payments made by the Purchaser and may hold the Purchaser liable for all sums due together with costs of collection, including attorneys' fees. In addition to such remedy We may at Our option (a) cancel the sale and/or (b) resell the Property at public auction or by private sale without reserve, and the Purchaser will be liable for any deficiency, handling charges, expenses of both sales, Our commission on both sales at Our regular rates, all other fees and charges due hereunder, and all other costs and expenses, including attorneys' fees and incidental damages. Any Purchaser defaulting hereunder will be deemed to have granted Us a security interest in, and We may maintain as collateral security for such Purchaser's obligations to Us, any Property in Our possession owned by such Purchaser. We shall have all of the rights afforded a secured party under the New York Uniform Commercial Code with respect to such Purchaser. We reserve the right to hold Property purchased at an auction or sale until payment has been made in full by wire transfer. Payment will not be deemed to have been made until We have received payment in full of the Total Purchase Price of Property plus applicable fees, charges and taxes by wire transfer or other acceptable method.

Multiple Auction Bidding Platforms and Methods. CAPSULE GALLERY INC. conducts auctions through multiple auction bidding platforms. A Bidder may participate in CAPSULE GALLERY INC.'s auctions in person at CAPSULE GALLERY INC.'s gallery, by telephone, by submission of written order or online using CAPSULE GALLERY INC.'s auction bidding platform or other auction bidding platforms.

Bidding, Right to Reject Bids and Disputes. If We decide that a bid is an insufficient amount, We may reject the bid and/or remove the Property from sale. The highest Bidder acknowledged by CAPSULE GALLERY INC. will be the Purchaser. In the event of any question regarding a bid or other dispute, We will have sole and final discretion to determine the Purchaser and to resolve all other elements of the transaction. We may withdraw the Property from auction or sale and may re-offer it at our discretion. We are not responsible for any acts, errors or omissions relating to bids or other elements of the transaction.

Recognition of Purchaser. After CAPSULE GALLERY INC.'s indication that a Lot has been sold, ownership rights to the Lot will pass to the Purchaser upon fulfillment by such Purchaser of all the conditions set forth herein. At the conclusion of bidding for a specific Lot, the Purchaser (a) assumes full risk and responsibility for the Lot, and (b) is obligated to pay the Total Purchase Price of the Lot.

Sales Tax. Unless exempt by law as evidenced by a valid resale certificate, a Purchaser will be required to pay New York sales tax on the Total Purchase Price. Right to Publicize. CAPSULE GALLERY INC. reserves the right to retain, publish and use for any purpose (including publicity), and to disclose to whomever CAPSULE GALLERY INC. elects, any information, photographs and written materials relating to Property. CAPSULE GALLERY INC. may exercise said rights before, during or after an auction or sale.

Reserve. Some Lots may be subject to a reserve ("Reserve"), which is the confidential minimum price below which a specific Lot will not be sold. A Reserve may be agreed upon between CAPSULE GALLERY INC. and the Consignor or it may be established by CAPSULE GALLERY INC. in its sole discretion. CAPSULE GALLERY INC. may implement a Reserve by opening the bidding process on behalf of the Consignor and then CAPSULE GALLERY INC. may bid on the Lot until the amount of the Reserve has been reached. If CAPSULE GALLERY INC. has an ownership interest in a Lot, CAPSULE GALLERY INC. may bid up to the Reserve to protect such interest. If CAPSULE GALLERY INC. decides that any opening bid is below the Reserve of the Lot, CAPSULE GALLERY INC. may reject the bid and/or withdraw the Lot from auction.

Agency. Property offered for sale by CAPSULE GALLERY INC. is offered in CAPSULE GALLERY INC.'s capacity as agent for the owner of the Property. The sale of Property occurs from the owner of the Property to the Purchaser.

Deposit. In certain instances, CAPSULE GALLERY INC. may require that a prospective Bidder pay to CAPSULE GALLERY INC. a deposit in order to place a bid on Property.

Limit of Liability. In no event will We be liable to a Purchaser for any reason for an amount that exceeds the portion of the Total Purchase Price actually paid.

Time of the Essence. Time is of the essence with respect to Your obligations under these Terms and Conditions.

Severance Provision. In case any one or more of the provisions contained in these Terms and Conditions shall, for any reason, be held to be invalid, illegal or unenforceable in any respect, these Terms and Conditions shall be construed as if such invalid, illegal or unenforceable provision(s) had never been contained herein.

Governing Law. These Terms and Conditions shall be governed by New York law under the jurisdiction of the courts of New York.

Modification. CAPSULE GALLERY INC. reserves the exclusive right to waive or modify these Terms and Conditions.

